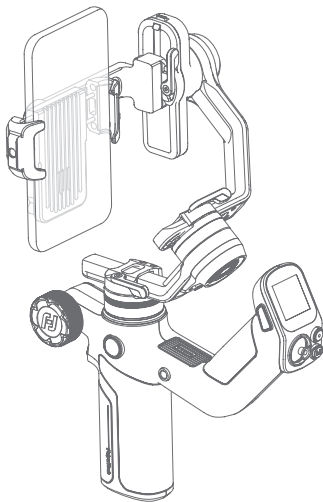




SCORP Mini 3

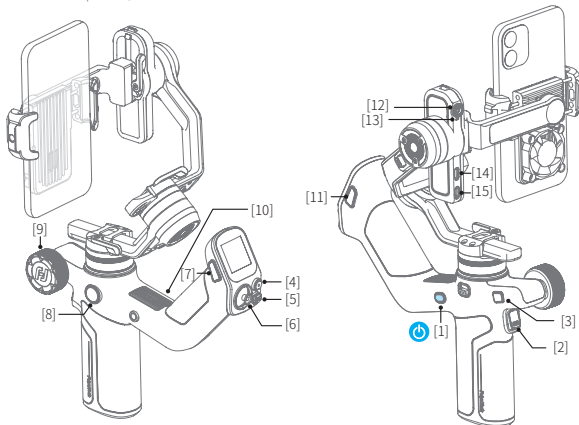
Smartphone Version

Instructions



1. Overview

* Not include smartphone/camera.



- | | |
|--------------------|------------------------------------|
| [1] Power button | [7] F1 button |
| [2] Trigger button | [8] Knob function switching button |
| [3] FPV button | [9] Multifunction knob |
| [4] Shutter button | [10] Indicator |
| [5] Mode button | [11] F2 button |
| [6] Joystick | [12] AI tracking camera |

- | |
|---|
| [13] AI tracking indicator |
| [14] Extension port |
| [15] Camera control port/USB-C power output port* |

*Supports charging for shooting devices compatible with the USB power supply protocol.

Download the App

Scan the QR code to download the app, or search for "Feiyu ON", "Feiyu SCORP" in the App Store or Google Play.

* Feiyu ON: iOS ≥ V12.0, Android ≥ V8.0
Feiyu SCORP: OS ≥ V13.0, Android ≥ V10.0

Mounting smartphone on gimbal for shooting
Feiyu ON



iOS



Android

Mount mirrorless camera, pocket camera or action camera on gimbal for shooting*
Feiyu SCORP



iOS



Android

*Optional Feiyu Scorp Mini3 camera accessories

User manual

Scan the QR code to get the latest user manual or download it from the official website.

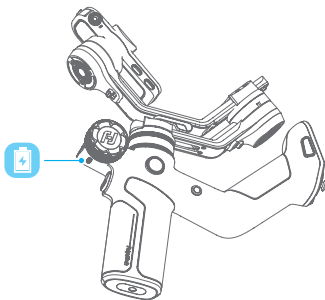
<https://www.feiyu-tech.com/feiyu-scorp-mini-3/>



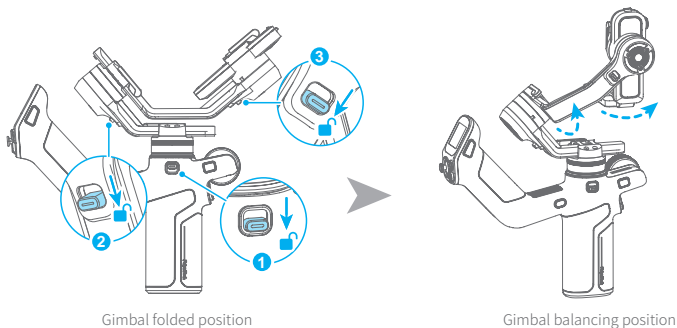
2. Getting started

2.1 Charging

Please fully charge the battery before power on the gimbal for the first time. Charging with USB-C cable, supports quick charge.



2.2 Adjust the gimbal to gimbal balancing position



3. Mounting the shooting equipment

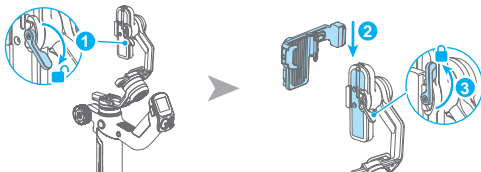
Before mounting, please ensure that the mounted shooting equipment and accessories are within the load requirements. For camera setup steps, please refer to the relevant compatibility list.

Visit <https://www.feiyu-tech.com/feiyu-scorp-mini-3/down.html> to check the latest relevant compatibility and controllable device list.

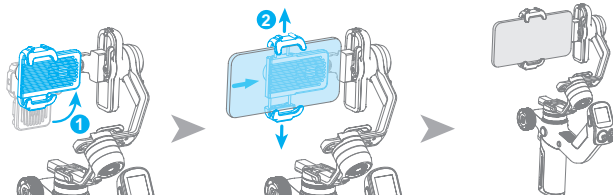
Before mounting the shooting equipment, make sure the camera is ready for shooting (Install the camera lens, and the lens cover should be removed, the memory card and battery needs to be inserted to the camera, and battery is fully charged), complete all the steps which mentioned in chapter "2. Getting started" and the gimbal is adjusted to **gimbal balancing position**. Make sure the gimbal is **powered off** or in **sleep mode** before mounting the camera. Optional Feiyu Scorp Mini3 camera accessories for mirrorless/compact/action cameras.

3.1 Mounting a smartphone

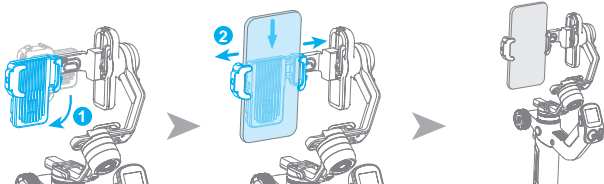
3.1.1 Mounting smartphone holder



3.1.2 Horizontal mounting for smartphone



3.1.3 Vertical mounting for smartphone

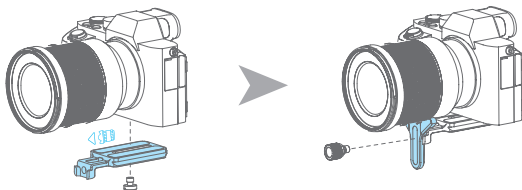


3.2 Mounting a Camera (Optional camera accessories)

3.2.1 Attach the quick release plate

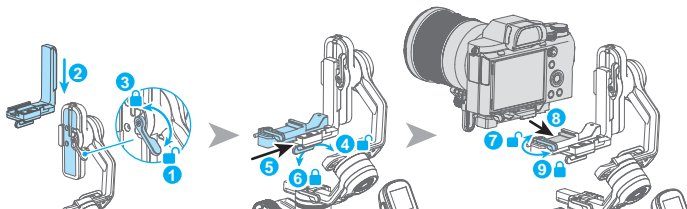
Attach the quick release plate to camera by tightening the screw.

If the camera doesn't have the 1/4-20 inch screw hole, please put the camera on mount adapter, which has 1/4-20 inch screw hole, and then follow the steps above to mount it.

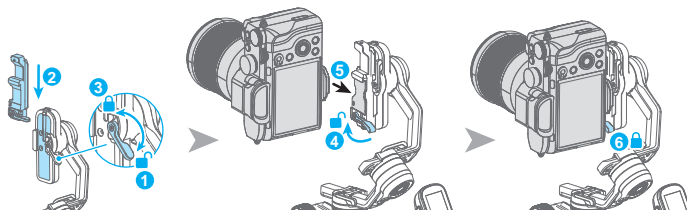


Users can mount smartphone into the optional smartphone holder, and follow the steps above to install it on the gimbal.

3.2.2 Horizontal mounting for camera

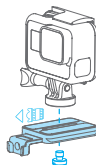


3.2.3 Vertical mounting for camera

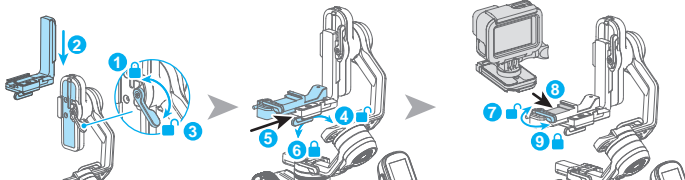


3.3 Mounting an action camera (Optional camera accessories)

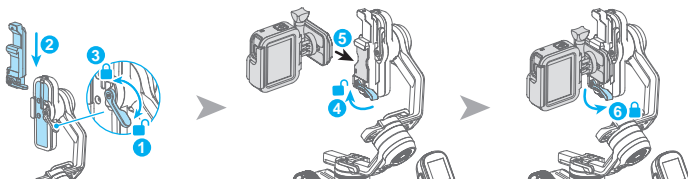
3.3.1 Attach the quick release plate



3.3.2 Horizontal mounting for action camera



3.3.3 Vertical mounting for action camera

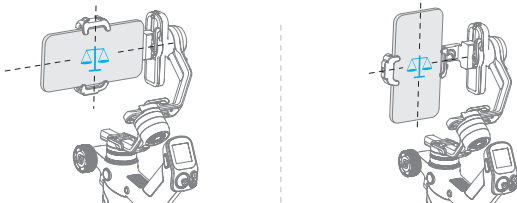


4. Gimbal balancing

Please balance the gimbal before shooting.



Tutorial Videos



Place the smartphone in a roughly balanced position.

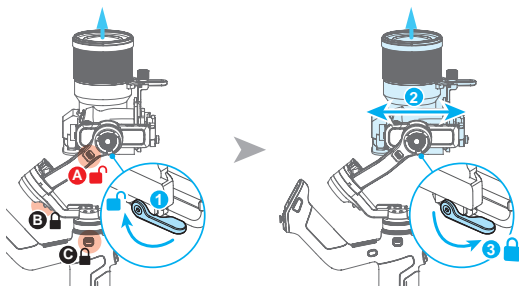
When optional Feiyu Scorp Mini3 camera accessories for mirrorless/compact/action cameras, take camera mounting as an example. Make sure the camera and lens are ready for shooting, and the gimbal is powered off or in sleep mode before balancing.

It is recommended to hold up the camera first, then move the slide arm, cross arm and vertical arm.

4.1 Balancing the tilt axis

4.1.1 Balancing the vertical tilt

- (1) Unlock motor lock **A** and secure motor locks **B** and **C**.
- (2) Position the camera lens vertically upward.
- (3) Unlock ❶, move ❷ in the opposite direction of the lens tilt until the lens remains vertically upward.
- (4) Lock ❶, supporting the camera upward to ensure proper fixation.



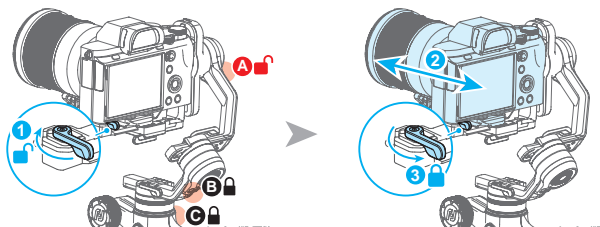
4.1.2 Adjust depth for the tilt axis

- (1) Place the camera lens pointing horizontally forward.

(2) Unlock ①, move ② in the opposite direction of the lens tilt until the lens remains horizontally forward.

(3) Lock ①, supporting the camera to ensure proper fixation.

If the camera remains stationary at a tilt angle of about $\pm 45^\circ$, it indicates that the tilt axis has been balanced.



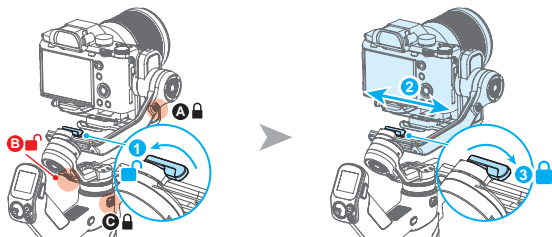
4.2 Balancing the roll axis

(1) Unlock motor lock B and secure motor locks A and C. Observe the camera's tilt direction.

(2) Unlock ①, move ② in the opposite direction of the lens tilt until the cross arm remains level, indicating it is balanced.

(3) Lock ①.

If the camera remains stationary at a horizontal angle, it indicates that the roll axis has been balanced.



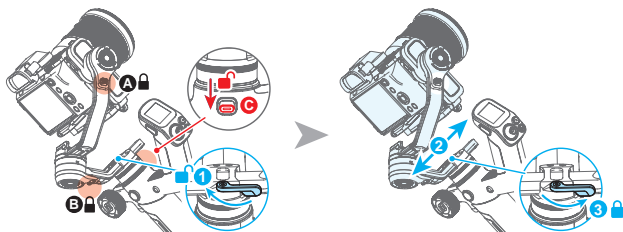
4.3 Balancing the pan axis

(1) Unlock motor lock C and secure motor locks A and B. Hold the handle and tilt the device to observe the camera's tilt direction.

(2) Unlock ① and move ② in the opposite direction of the lens tilt until the vertical arm stays still, indicating it is properly balanced.

(3) Lock ①.

If the camera remains stationary at a horizontal angle, it indicates that the yaw axis has been balanced.

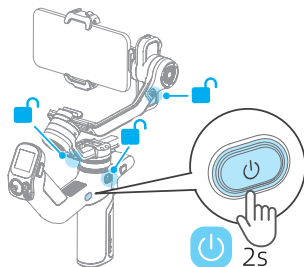


5. Operation

5.1 Power ON/OFF

Before power on the gimbal, make sure you have balanced gimbal, and unlocked all the three axes. If you haven't unlocked all the 3 axes, gimbal will enter sleep mode to protect itself. Please single tap power button to wake up gimbal after unlocked all the 3 axes.

Long press the power button and release it when you hear the beep sound to power on/off.



5.2 Follow mode introduction

PF: Pan follow, only the pan axis follows the movement of user's hand.

PTF: Pan and tilt follow, where both the pan and tilt axes follow the movement of user's hand, but roll axis does not.

FPV: Pan, tilt and roll follow, where all 3 axes follow the movement of user's hand.

Lock: All 3 axes do not follow the movement of user's hand, gimbal keeps the direction of the camera fixed.

FFW: Flash follow, where all 3 axes follow the movement of user's hand in high follow speed.

5.3 Button operation



Power button / M button

Long press: Power on/Power off

Single tap: Wake up(In sleep mode)/Battery level display (When powered off)

Double tap: Enter sleep mode



M button

Single tap: PF mode(Default) /PTF/FPV (Switch in turn)

Tap five times: Horizon calibration



Trigger button

Single tap:Face tracking ☆

Double tap: Recenter (in non-selfie mode) / Selfie recenter (in selfie mode)

Triple tap: Enter/Exit selfie mode (Pan axis turn 180°)

Press and hold: Lock mode (Release to exit)

You can custom the function via App



Joystick

Push:

(1) Control the movement of the tilt and pan axes.

(2) Control album ☆



Shutter button

Camera Connected

Press half way: Focus

Single tap (Fully): Start/stop recording

Long press (Fully): Take photo

Phone Connected

Press half way: Focus ☆

Single tap (Fully): Shutter

Long press (Fully): Switch between video/ photo mode ☆



FPV button

Single tap: Enter/Exit FPV mode



F1 Button

Single tap: Enter/exit album ☆

Double tap: Enter/exit portrait mode

Triple Tap: AI power on/off

Long Press: Enter/Exit AI tracking (With AI Power enabled)



F2 Button

Single tap: (1) Lock/Unlock screen (In home page)

(2) Return to home page (In other pages)

Double tap: Enter/exit FFW mode



Multifunction knob

Turn:

(1) Control the movement of the roll, tilt and pan axes.

(2) Control electronic focus/zoom (The smartphone requires the use of the Feiyu ON App)

(3) Control focus motor.

(4) Adjust the parameter in the touch screen.

Set current control option as option (1) or (2) or (3) through long press the knob function switching button or swipe up in home page.



Knob function switching button

Single tap:

(1) Switch the control object while controlling the movement of the 3 axes (Tilt/Pan/Roll)

(2) When in electronic focus/zoom control state, single tap to switch between electronic focus and electronic zoom ☆

Long press: Switch the control options of Multifunction knob in turn (The movement of the 3 axes, electronic focus/zoom)

Key Combinations:

A: Joystick down + triple tap the F2 button: Clears all Bluetooth pairing information for the phone and Bluetooth remote. After reboot, you can re-pair devices.

B: Joystick up + triple tap the F2 button: Clears all Bluetooth pairing information for the mirrorless camera. After reboot, you can re-pair the camera.

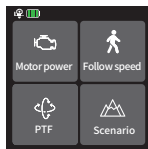
C: Knob function switching button + Power button: Press together for 1 second to force the gimbal to shut down.

Note:

(1) When using a camera or the original camera app on your smartphone to capture photos or videos, some features may require specific camera or smartphone support. You can visit the official website to check the list of compatible devices: <https://www.feiyu-tech.com/feiyu-scorp-mini-3/>

(2) We recommend using this product in conjunction with the Feiyu ON / Feiyu SCORP App. Operations marked with a ☆ are designed for use with smartphones paired with the Feiyu ON App.

5.4 Touch screen operation



Home page



Motor power

Use auto tune to adjust the motor power automatically, or adjust motor power for each axis manually.



Follow speed

User can select different gimbal follow speed profiles, or custom follow speed.



Follow mode

Select gimbal follow mode

⏪ PF

⤿ PTF

⚙️ FPV

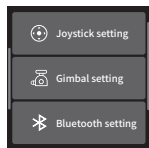
🔒 Lock

⚡ FFW



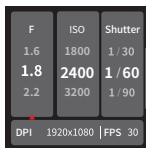
Scenario

Scenario-based functional application.



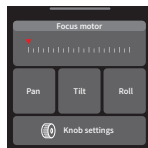
Swipe from right to left

Joystick, gimbal and more settings



Swipe from left to right

Shooting parameters settings



Swipe up

Multifunction knob settings

- Return to previous menu: Swipe to right

5.5 AI Tracking

Under AI Power-On State, the following controls are available:

AI Gesture Control



OK gesture (Left or right hand): Start tracking/Stop tracking

Start tracking with the green light stays on. Repeat this gesture, stop tracking, enter standby mode with the red light stays on. Two gestures must be separated by 3 seconds.



Thumbs opposite direction: Stop tracking

Stop tracking, enter standby mode with the red light stays on.



Spread palm (Left or right hand): Shutter

In photo/video mode: Take photo or start recording after a 3-second countdown with beep sound.

After started the recording, do the gesture again to stop recording.



Double L-Shaped gestures: Custom framing

Start framing, green light blinks fast. When the subject moves to the desired position, perform this gesture again to complete framing, and the green light stays on.



Two thumbs up gesture: Disable gesture control

In tracking mode, this gesture can disable the gesture control function. Once disabled, AI tracking can still be controlled via the buttons.

Button control

Long press F1 button: Start tracking/Stop tracking

Triple tap F1 button: AI power on/off

Double tap Trigger button: Stop tracking

5.6 Indicator

[1] Follow status indicator

TILT = Tilt axis

ROLL = Roll axis

PAN = Pan axis

The indicator is on which means the corresponding axis follows the movement of user's hand.

[2] Camera/Bluetooth indicator

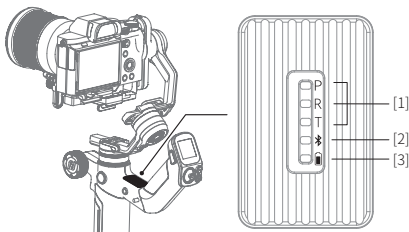
[3] Battery indicator

Green light: Power on / Charging complete

Red light: Charging

Red light flashing rapidly: Low power, will auto power off

Light off: Power off



6. Specifications

Product Name: Feiyu SCORP Mini 3 Smartphone Version

Product Model: FYSm3m

Max. Tilt Range: +168° ~-145° ($\pm 3^\circ$)

Max. Roll Range: +70° ~-245° ($\pm 3^\circ$)

Max. Pan Range: 360°

Weight (main body): About 940g (Not including tripod)

Payload Capability: About 2000g (Well-balanced)

Battery life: ≤ 14 Hours (Motion State)

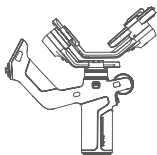
Battery: 4500mAh

Operating Voltage: 6.8V-8.4V

Compatible: Compatible with smartphones (Width: 52mm~88mm, thickness: < 9.5 mm); With optional camera accessories, compatible with camera and pocket camera (Sony, Canon, Nikon, Panasonic, etc. For specific camera and lens compatibility, please refer to the official website's compatibility list.) , action camera like GoPro.

 Bluetooth name: FY_SCORP_Mini3_XX

List



[1]



[2]



[3]



[4]



[5]



[6]



[7]

- [1] Main body x1
- [2] Smartphone holder (with fan) x1
- [3] Tripod x1
- [4] Manual x1
- [5] Type-C to Lightning Cable x1
- [6] Type-C Cable x1
- [7] Type-C to Type-C Cable x1

Notice

1. Make sure motor spinning is not blocked by external force when the product is power on.
2. The product DO NOT contact water or other liquid if the product is not mark waterproof or splash-proof. Waterproof and splash-proof product DO NOT contact sea water or other corrosive liquid.
3. DO NOT disassembly the product except marked detachable. It need send to FeiyuTech after-sales or authorized service center to fix it if you accidentally disassembly and cause abnormal work. The relevant costs are borne by user.
4. Prolonged continuous operation may cause the product surface temperature to rise, please operate carefully.
5. DO NOT drop or strike the product. If the product is abnormal, contact Feiyu After-sales support.

Storage and Maintenance

1. Keep the product out of the reach of children and pets.
2. DO NOT leave the product near heat sources such as a furnace or heater. DO NOT leave the product inside of a vehicle on hot days.
3. Please storage the product in dry environment.
4. DO NOT overcharge or overuse the battery, otherwise it will cause damage to the battery core. If does not use the product for a long time, please charge it at least once within one month.
5. Never use the product when the temperature is too high or too low.

IC warning

This device contains license-exempt transmitter(s)/re-ceiver(s) that comply with Innovation, Science and Economic Development Canada's license-exempt RSS(s). Operation is subject to the following two conditions:

- (1) This device may not cause interference.
- (2) This device must accept any interference, including interference that may cause undesired operation of the device.

Le présent appareil est conforme aux CNR d'Industrie Canada applicables aux appareils radio exempts de licence. L'exploitation est autorisée aux deux conditions suivantes :

- (1) l'appareil ne doit pas produire de brouillage, et
- (2) l'utilisateur de l'appareil doit accepter tout brouillage radioélectrique subi, même si le brouillage est susceptible d'en compromettre le fonctionnement.

IC Radiation Exposure Statement

This equipment complies with the limits of exposure to IC radiation defined for an uncontrolled environment. Cet équipement est conforme aux limites d'exposition aux rayonnements de la IC établies pour un environnement non contrôlé.

FCC regulatory conformance

This device complies with Part 15 of the FCC Rules. Operation is subject to the following two conditions:

- (1) This device may not cause harmful interference.
- (2) This device must accept any interference received, including interference that may cause undesired operation.

NOTE

This equipment has been tested and found to comply with the limits for a Class B digital device, pursuant to part 15 of the FCC Rules. These limits are designed to provide reasonable protection against harmful interference in a residential installation.

This equipment generates uses and can radiate radio frequency energy and, if not installed and used in accordance with the instructions, may cause harmful interference to radio communications. However, there is no guarantee that interference will not occur in a particular installation. If this equipment does cause harmful interference to radio or television reception, which can be determined by turning the equipment off and on, the user is encouraged to try to correct the interference by one or more of the following measures:

- Reorient or relocate the receiving antenna.
- Increase the separation between the equipment and receiver.
- Connect the equipment into an outlet on a circuit different from that to which the receiver is connected.
- Consult the dealer or an experienced radio/TV technician for help.

NOTE

The manufacturer is not responsible for any radio or TV interference caused by unauthorized modifications to this equipment. Such modifications could void the user's authority to operate the equipment.

RF Exposure

This equipment complies with FCC radiation exposure limits set forth for an uncontrolled environment.



Warning: Please read the user manual carefully before use. Improper use of this product may cause damage and pose a risk to your safety.



Feiyu Gimbal Privacy Policy

Guilin Feiyu Technology Incorporated Company (hereinafter referred to as "Feiyu", "we", or "us") understands the importance of your privacy and is committed to protecting it. This Privacy Policy (the "Policy") applies to the gimbals we provide.

If under the laws of your jurisdiction you are considered a minor or do not have full legal capacity (hereinafter "Minor"), please carefully read and fully understand this Policy together with your legal guardian. You may use Feiyu products and services only after obtaining your guardian's consent.

Please read this Policy carefully to ensure you understand how we handle your personal information. We will process your personal information in compliance with applicable laws and regulations, based on lawful and legitimate purposes and in accordance with the principle of good faith. If you have any questions about this Policy, you can contact us using the information provided on our website.

I. How we collect and use your personal information

Personal information is information recorded electronically or otherwise that relates to an identified or identifiable natural person, and does not include information that has been fully anonymized. Please note that definitions of "personal information" (also referred to as "personal data") may vary in different countries or regions; for specifics, please refer to the personal information protection laws and regulations applicable in your location.

We adhere to the principles of lawfulness, fairness, and necessity when collecting and using your personal information for the purposes described below. We collect the personal information you voluntarily provide during your use of our products and services, or that is generated as a result of such use. If we need to use your personal information for any purposes not stated in this Policy, or to use information collected for one purpose for another purpose, we will notify you in a reasonable manner and obtain your consent again before such use.

(A) Collection of Personal Information

When you use our products/services, we will collect and use the following personal information:

1. To provide you with the "Gesture Control" service, when you enable the "Gesture Control" feature and make a gesture, the gimbal captures images of your head and hands. On-device AI analyzes your hand structure in real time to recognize the gesture command and activate the specified function. This processing is one-time only and is necessary to provide the service. Rest assured, we do not store any images of your head or data about your hand structure. You can turn off the AI camera at any time under More Settings > AI Power.
2. To provide you with the "AI Tracking" service, when you enable the "AI Tracking" feature during use, the gimbal captures images of your head and body. On-device AI analyzes your head and body structure in real time to track movement. This processing occurs only during each recognition session and is necessary to provide the service. We do not store or retain any of your head or body structure data.
3. In addition to the information described above, in order to provide you with customer support services, we may collect the content you submit to our support team.
4. The content of this Policy will be updated periodically. Specific updates will be detailed in the manual on our official website at <https://www.feiyu-tech.com>.

Please be informed and rest assured that we deeply respect and prioritize the protection of your personal privacy. We will not store any video or audio content or recordings generated during your communications using our device.

