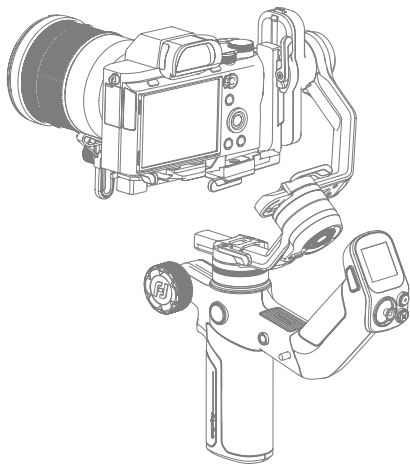


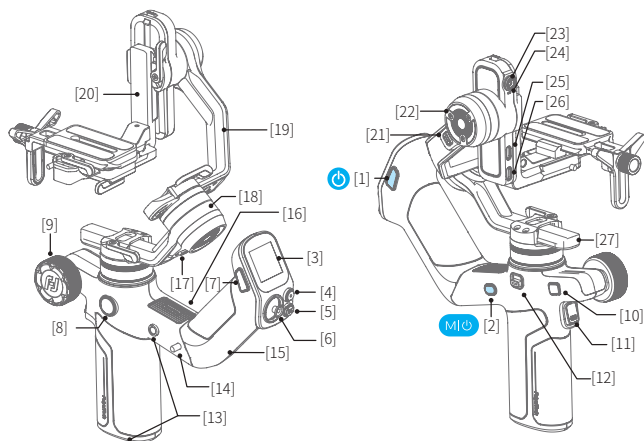
SCORP Mini 3 Pro

Instructions



1. Overview

* Not include camera/smartphone.



- [1] Handle power button
- [2] Main body power button
- [3] Touch screen
- [4] Shutter button
- [5] Mode button
- [6] Joystick
- [7] F1 button
- [8] Knob function switching button
- [9] Multifunction knob
- [10] Photo/video button
- [11] Trigger button
- [12] Pan lock
- [13] 1/4 inch thread hole
- [14] Handle lock
- [15] Detachable handle

- [16] Indicator
- [17] Roll lock
- [18] Roll axis
- [19] Cross arm
- [20] Slide arm
- [21] Tilt lock
- [22] Tilt axis
- [23] AI tracking camera
- [24] AI tracking indicator
- [25] Extension port
- [26] Camera control port/USB-C power output port ①
- [27] Versatile arm

① Supports charging for shooting devices compatible with the USB power supply protocol

User manual

Scan the QR code to get the latest user manual or download it from the official website.

<https://www.feiyu-tech.com/feiyu-scorp-mini-3-pro/>



Download the App

Scan the QR code to download the app, or search for "**Feiyu SCORP**", "**Feiyu ON**" in the App Store or Google Play.

* Feiyu SCORP: OS \geq V13.0, Android \geq V10.0

Feiyu ON: iOS \geq V12.0, Android \geq V8.0

Mount mirrorless camera, pocket camera or action camera on gimbal for shooting

Feiyu SCORP



iOS



Android

Mounting smartphone on gimbal for shooting

Feiyu ON



iOS

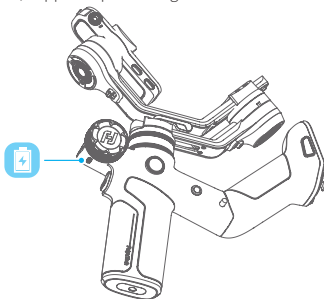


Android

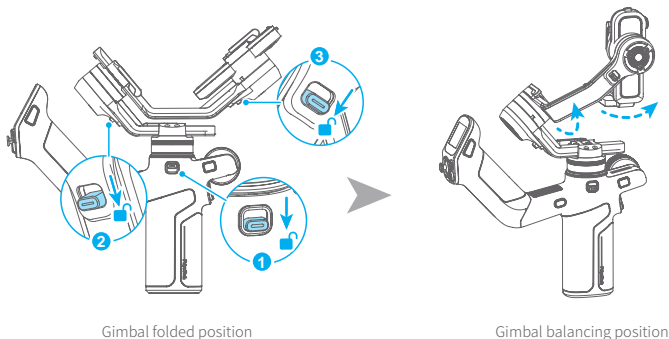
2. Getting started

2.1 Charging

Please fully charge the battery before power on the gimbal for the first time.
Charging with USB-C cable, supports quick charge.



2.2 Adjust the gimbal to gimbal balancing position



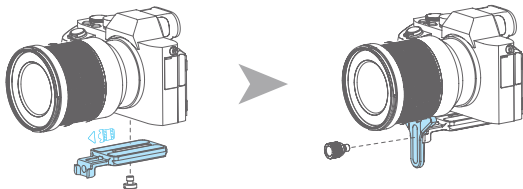
3. Mounting the shooting equipment

Before mounting the shooting equipment, make sure the camera is ready for shooting (Install the camera lens, and the lens cover should be removed, the memory card and battery needs to be inserted to the camera, and battery is fully charged) , complete all the steps which mentioned in chapter "2. Getting started" and the gimbal is adjusted to **gimbal balancing position**. Make sure the gimbal is powered off or in sleep mode before mounting the camera.

3.1 Mounting a Camera

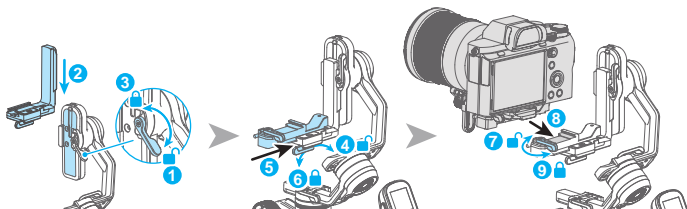
3.1.1 Attach the quick release plate

Attach the quick release plate to camera by tightening the screw.
Install the lens holder on the quick release plate if needed, the rubber of the lens holder must be directly under the lens. It is recommended to use the lens holder when using a long or heavy lens.

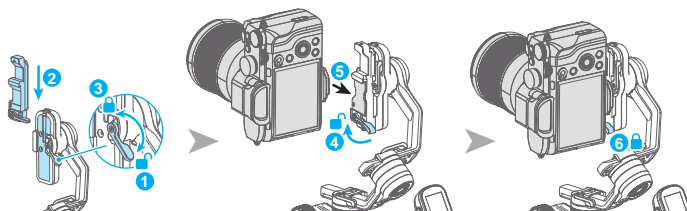


If the camera doesn't have the 1/4-20 inch screw hole, please put the camera on mount adapter, which has 1/4-20 inch screw hole, and then follow the steps above to mount it.

3.1.2 Horizontal mounting for camera

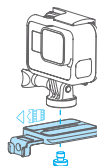


3.1.3 Vertical mounting for camera

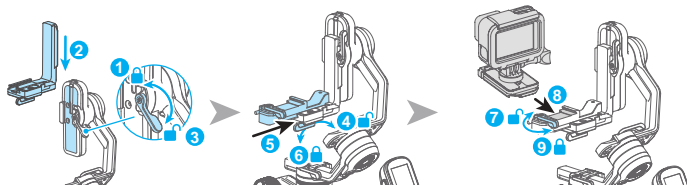


3.2 Mounting an action camera

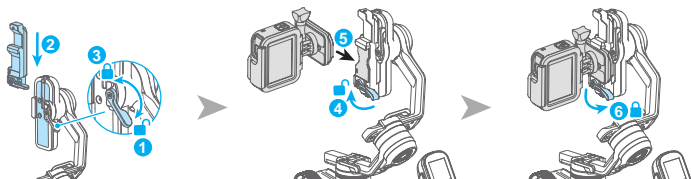
3.2.1 Attach the quick release plate



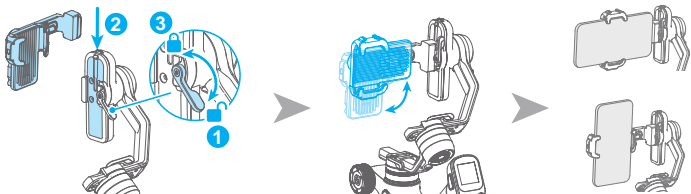
3.2.2 Horizontal mounting for action camera



3.2.3 Vertical mounting for action camera



3.3 Mounting a smartphone



4. Gimbal balancing

Please balance the gimbal before shooting. Take camera mounting as an example. Make sure the camera and lens are ready for shooting, and the gimbal is powered off or in sleep mode before balancing.

It is recommended to hold up the camera first, then move the slide arm, cross arm and vertical arm.

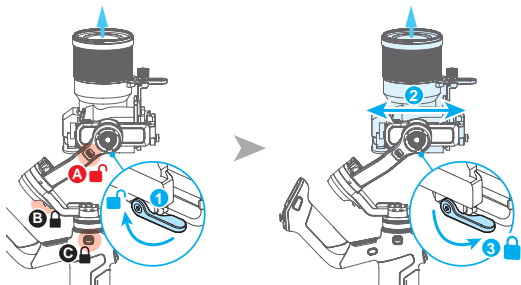


Tutorial Videos

4.1 Balancing the tilt axis

4.1.1 Balancing the vertical tilt

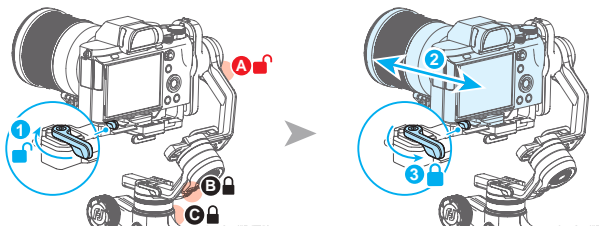
- (1) Unlock motor lock **A** and secure motor locks **B** and **C**.
- (2) Position the camera lens vertically upward.
- (3) Unlock ①, move ② in the opposite direction of the lens tilt until the lens remains vertically upward.
- (4) Lock ①, supporting the camera upward to ensure proper fixation.



4.1.2 Adjust depth for the tilt axis

- (1) Place the camera lens pointing horizontally forward.
- (2) Unlock ①, move ② in the opposite direction of the lens tilt until the lens remains horizontally forward.
- (3) Lock ①, supporting the camera to ensure proper fixation.

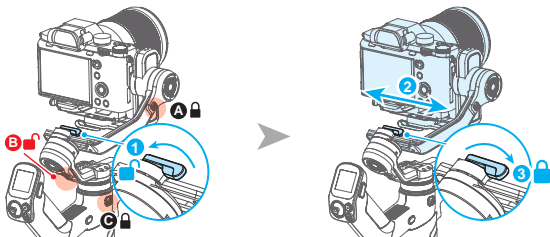
If the camera remains stationary at a tilt angle of about $\pm 45^\circ$, it indicates that the tilt axis has been balanced.



4.2 Balancing the roll axis

- (1) Unlock motor lock B and secure motor locks A and C. Observe the camera's tilt direction.
- (2) Unlock ①, move ② in the opposite direction of the lens tilt until the cross arm remains level, indicating it is balanced.
- (3) Lock ①.

If the camera remains stationary at a horizontal angle, it indicates that the roll axis has been balanced.



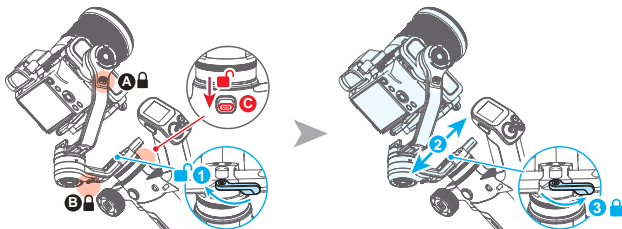
4.3 Balancing the pan axis

(1) Unlock motor lock **C** and secure motor locks **A** and **B**. Hold the handle and tilt the device to observe the camera's tilt direction.

(2) Unlock ① and move ② in the opposite direction of the lens tilt until the vertical arm stays still, indicating it is properly balanced.

(3) Lock ①.

If the camera remains stationary at a horizontal angle, it indicates that the yaw axis has been balanced.



5. Operation

5.1 Power ON/OFF

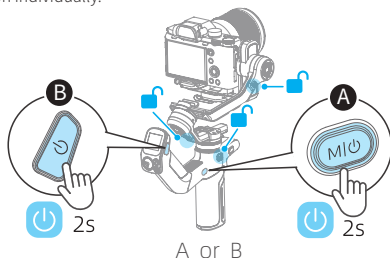
Before power on the gimbal, make sure you have balanced gimbal, and unlocked all the three axes. If you haven't unlocked all the 3 axes, gimbal will enter sleep mode to protect itself. Please single tap power button to wake up gimbal after unlocked all the 3 axes.

! Please set motor power first after powering on gimbal for the first time or after changing a new camera/lens.

Long press the power button and release it when you hear the beep sound to power on/off.

When assembled, the device can be powered on using either A or B. In separate mode, A and B

must be powered on individually.



5.2 Follow mode introduction

PF: Pan follow, only the pan axis follows the movement of user's hand.

PTF: Pan and tilt follow, where both the pan and tilt axes follow the movement of user's hand, but roll axis does not.

FPV: Pan, tilt and roll follow, where all 3 axes follow the movement of user's hand.

Lock: All 3 axes do not follow the movement of user's hand, gimbal keeps the direction of the camera fixed.

FFW: Flash follow, where all 3 axes follow the movement of user's hand in high follow speed.

5.3 Button operation



Main body power button / M button

Long press: Power on/Power off

Single tap: Wake up(In sleep mode)/Display battery levels of the gimbal and handle
(When powered off)

Double tap: Enter sleep mode



Handle power button

Long press: Power on*/Power off*

Single tap:

(1) Lock/Unlock screen (In home page)

(2) Return to home page (In other pages)

(3) Display handle battery level* (When powered off)

Double tap: Enter FFW mode

*When the handle is detached, it only controls the handle.



Handle M button

Single tap: PF mode(Default) /PTF/FPV (Switch in turn)

Long press for 3 seconds: Enter the auto tune menu

Tap five times: Horizon calibration



Trigger button

Single tap:Face tracking ☆

Double tap: Recenter (in non-selfie mode) / Selfie recenter (in selfie mode)

Triple tap: Enter/Exit selfie mode (Pan axis turn 180°)

Press and hold: Lock mode (Release to exit)

You can custom the function via App



Joystick

Push:

(1) Control the movement of the tilt and pan axes.

(2) Control album ☆



Shutter button

Camera Connected

Press half way: Focus

Single tap (Fully): Start/stop recording

Long press (Fully): Take photo

Phone Connected

Press half way: Focus ☆

Single tap (Fully): Shutter

Long press (Fully): Switch between video/ photo mode ☆



Photo/video button

Camera Connected

Single tap: Start/stop recording

Long press :Take photo

Phone Connected

Single tap: Shutter

Long press: Switch between video/ photo mode ☆



F1 Button

Single tap: Enter/exit album ☆

Double tap: Enter/exit portrait mode

Triple Tap: AI power on/off

Long Press: Enter/Exit AI tracking (With AI Power enabled)



Multifunction knob

Turn:

- (1) Control the movement of the roll, tilt and pan axes.
- (2) Control electronic focus/zoom (The smartphone requires the use of the Feiyu ON App)
- (3) Control focus motor.
- (4) Adjust the parameter in the touch screen.

Set current control option as option (1) or (2) or (3) through long press the knob function switching button or swipe up in home page.



Knob function switching button

Single tap:

- (1) Switch the control object while controlling the movement of the 3 axes (Tilt/Pan/Roll)
- (2) When in electronic focus/zoom control state, single tap to switch between electronic focus and electronic zoom ☆

Long press: Switch the control options of Multifunction knob in turn (The movement of the 3 axes, electronic focus/zoom)

Key Combinations:

A: Joystick down + triple tap the handle power button: Clears all Bluetooth pairing information for the phone, detachable handle, and Bluetooth remote. After reboot, you can re-pair devices.

B: Joystick up + triple tap handle power button: Clears all Bluetooth pairing information for the mirrorless camera. After reboot, you can re-pair the camera.

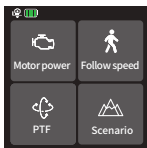
C: M button + F1 button: Press together to force the handle to power off n within 1 second (when detached).

Note:

(1) When using a camera or the original camera app on your smartphone to capture photos or videos, some features may require specific camera or smartphone support. You can visit the official website to check the list of compatible devices: <https://www.feiyu-tech.com/feiyu-scorp-mini-3-pro/>

(2) We recommend using this product in conjunction with the Feiyu ON / Feiyu SCORP App. Operations marked with a ☆ are designed for use with smartphones paired with the Feiyu ON App.

5.4 Touch screen operation



Home page



Motor power

Use auto tune to adjust the motor power automatically, or adjust motor power for each axis manually.



Follow speed

User can select different gimbal follow speed profiles, or custom follow speed.



Follow mode

Select gimbal follow mode



PF



PTF



FPV



Lock

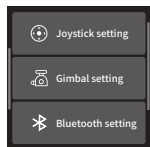


FFW



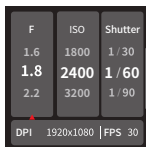
Scenario

Scenario-based functional application.



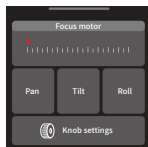
Swipe from right to left

Joystick, gimbal and more settings



Swipe from left to right

Shooting parameters settings



Swipe up

Multifunction knob settings

- **Return to previous menu:** Swipe to right

5.5 AI Tracking

Under AI Power-On State, the following controls are available:

AI Gesture Control



OK gesture (Left or right hand): Start tracking/Stop tracking

Start tracking with the green light stays on. Repeat this gesture, stop tracking, enter standby mode with the red light stays on. Two gestures must be separated by 3 seconds.



Thumbs opposite direction: Stop tracking

Stop tracking, enter standby mode with the red light stays on.



Spread palm (Left or right hand): Shutter

In photo/video mode: Take photo or start recording after a 3-second countdown with beep sound.

After started the recording, do the gesture again to stop recording.



Double L-Shaped gestures: Custom framing

Start framing, green light blinks fast. When the subject moves to the desired position, perform this gesture again to complete framing, and the green light stays on.



Two thumbs up gesture: Disable gesture control

In tracking mode, this gesture can disable the gesture control function. Once disabled, AI tracking can still be controlled via the buttons.

Button control

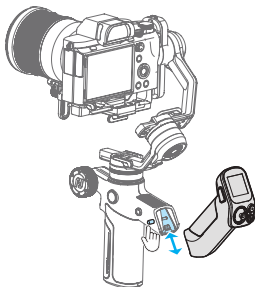
Long press F1 button: Start tracking/Stop tracking

Triple tap F1 button: AI power on/off

Double tap Trigger button: Stop tracking

5.6 Handle Separation

To separate the handle, press and hold the handle lock, then slide the handle downward. After separation, the gimbal can be controlled wirelessly.



5.7 Indicator

[1] Follow status indicator

TILT = Tilt axis

ROLL = Roll axis

PAN = Pan axis

The indicator is on which means the corresponding axis follows the movement of user's hand.

[2] Camera/Bluetooth indicator

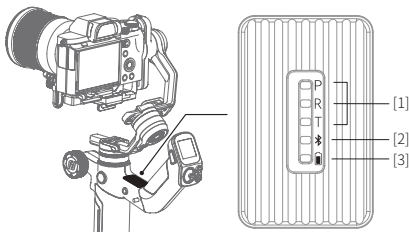
[3] Battery indicator

Green light: Power on / Charging complete

Red light: Charging

Red light flashing rapidly: Low power, will auto power off

Light off: Power off



6. Specifications

Product name: Feiyu SCORP Mini 3 Pro Handheld Gimbal for Camera

Product model: FeiyuSmi3p

Max. Tilt Range: +168° ~ -145° ($\pm 3^\circ$)

Max. Roll Range: +70° ~ -245° ($\pm 3^\circ$)

Max. Pan Range: 360°

Weight (main body): About 1000g (Not including tripod)


Payload Capability: About 2000g (Well-balanced)

Battery life: ≤ 14 Hours (Motion State)

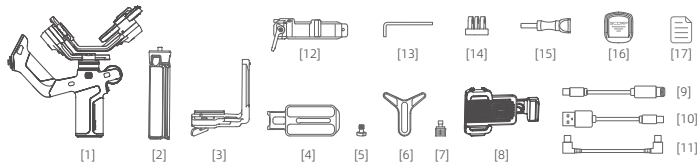
Battery: 4500mAh

Operating Voltage: 6.8V-8.4V

Compatible: Mirrorless camera and pocket camera (Sony, Canon, Nikon, Panasonic, etc. For specific camera and lens compatibility, please refer to the official website's compatibility list.), action camera like GoPro, and smartphone (Width: 52mm~88mm, thickness: $< 9.5\text{mm}$)

 Bluetooth name: FY_SCORP_M3P_XX

List



[1] Main body x1

[2] Tripod x1

[3] Fixed plate x1

[4] Quick release plate x1

[5] Camera fixed screw x1

[6] Lens holder x1

[7] Lens holder screw x1

[8] Smartphone holder (with fan) x1

[9] Type-C to Lightning Cable x1

[10] Type-C Cable x1

[11] Type-C to Type-C Cable x1

[12] Slider x1

[13] Hex key x1

[14] GoPro adapter x1

[15] Long thumb screw x1

[16] Dust Cover x1

[17] Manual x1

Notice

1. Make sure motor spinning is not blocked by external force when the product is power on.
2. The product DO NOT contact water or other liquid if the product is not mark waterproof or splash-proof. Waterproof and splash-proof product DO NOT contact sea water or other corrosive liquid.
3. DO NOT disassembly the product except marked detachable. It need send to FeiyuTech after-sales or authorized service center to fix it if you accidentally disassembly and cause abnormal work. The relevant costs are borne by user.
4. Prolonged continuous operation may cause the product surface temperature to rise, please operate carefully.
5. DO NOT drop or strike the product. If the product is abnormal, contact Feiyu After-sales support.

Storage and Maintenance

1. Keep the product out of the reach of children and pets.
2. DO NOT leave the product near heat sources such as a furnace or heater. DO NOT leave the product inside of a vehicle on hot days.
3. Please storage the product in dry environment.
4. DO NOT overcharge or overuse the battery, otherwise it will cause damage to the battery core. If does not use the product for a long time, please charge it at least once within one month.
5. Never use the product when the temperature is too high or too low.



Warning: Please read the user manual carefully before use. Improper use of this product may cause damage and pose a risk to your safety.

- Keep small cells and batteries which are considered swallowable out of the reach of children.
 - Swallowing may lead to burns, perforation of soft tissue, and death. Severe burns can occur within 2 h of ingestion.
 - In case of ingestion of a cell or battery, seek medical assistance promptly.
-

IC warning

This device contains license-exempt transmitter(s)/re-ceiver(s) that comply with Innovation, Science and Economic Development Canada's license-exempt RSS(s). Operation is subject to the following two conditions:

- (1) This device may not cause interference.
- (2) This device must accept any interference, including interference that may cause undesired operation of the device.

Le présent appareil est conforme aux CNR d'Industrie Canada applicables aux appareils radio exempts de licence.

L'exploitation est autorisée aux deux conditions suivantes :

- (1) l'appareil ne doit pas produire de brouillage, et
- (2) l'utilisateur de l'appareil doit accepter tout brouillage radioélectrique subi, même si le brouillage est susceptible d'en compromettre le fonctionnement.

IC Radiation Exposure Statement

This equipment complies with the limits of exposure to IC radiation defined for an uncontrolled environment.

Cet équipement est conforme aux limites d'exposition aux rayonnements de la IC établies pour un environnement non contrôlé.

FCC regulatory conformance

This device complies with Part 15 of the FCC Rules. Operation is subject to the following two conditions:

- (1) This device may not cause harmful interference.
- (2) This device must accept any interference received, including interference that may cause undesired operation.

NOTE

This equipment has been tested and found to comply with the limits for a Class B digital device, pursuant to part 15 of the FCC Rules. These limits are designed to provide reasonable protection against harmful interference in a residential installation.

This equipment generates uses and can radiate radio frequency energy and, if not installed and used in accordance with the instructions, may cause harmful interference to radio communications. However, there is no guarantee that interference will not occur in a particular installation. If this equipment does cause harmful interference to radio or television reception, which can be determined by turning the equipment off and on, the user is encouraged to try to correct the interference by one or more of the following measures:

- Reorient or relocate the receiving antenna.
- Increase the separation between the equipment and receiver.
- Connect the equipment into an outlet on a circuit different from that to which the receiver is connected.
- Consult the dealer or an experienced radio/TV technician for help.

NOTE

The manufacturer is not responsible for any radio or TV interference caused by unauthorized modifications to this equipment. Such modifications could void the user's authority to operate the equipment.

RF Exposure

This equipment complies with FCC radiation exposure limits set forth for an uncontrolled environment.



