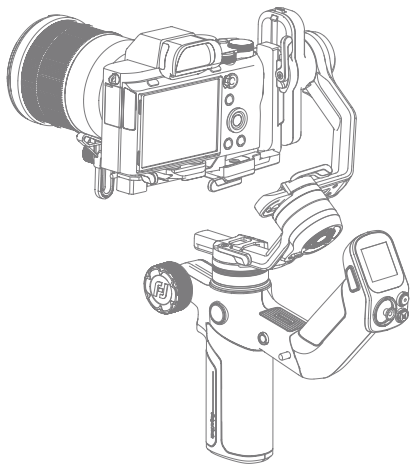




SCORP Mini 3 Pro

Instructions



Catalogue

1. Overview	1
2. Getting started	2
2.1 Charging	2
2.2 Adjust the gimbal to gimbal balancing position	2
3. Mounting the shooting equipment	3
3.1 Mounting a Camera	3
3.2 Mounting an action camera	4
3.3 Mounting a smartphone	5
4. Gimbal balancing	6
4.1 Balancing the tilt axis	6
4.2 Balancing the roll axis	7
4.3 Balancing the pan axis	8
5. Power ON/ OFF& Wake up	8
5.1 Power ON/ OFF	8
5.2 Lock/Unlock screen	9
5.3 Sleep/Wake up	9
6. Function/Modes introduction	10
6.1 Follow modes introduction	10
6.2 Other function introduction	11
7. App Connecting	11
7.1 Connect App	11
7.2 Function introduction of Feiyu SCORP App	12
7.3 Function introduction of Feiyu ON App	15
8. Operation	17
8.1 Button operation	17
8.2 Touch screen operation	19
8.3 Function operation	23
8.4 Control ports	31
9. Specifications	32

Tutorial

· The tutorial videos can be watched at FeiyuTech official website or scan the QR code.
<https://www.feiyu-tech.com/play/>



Download the App

Scan the QR code to download the app, or search for "**Feiyu SCORP**", "**Feiyu ON**" in the App Store or Google Play.

* Feiyu SCORP: OS \geq V13.0, Android \geq V10.0

Feiyu ON: iOS \geq V12.0, Android \geq V8.0

Mount mirrorless camera, pocket camera
or action camera on gimbal for shooting

Feiyu SCORP



iOS



Android

Mounting smartphone on gimbal for
shooting

Feiyu ON



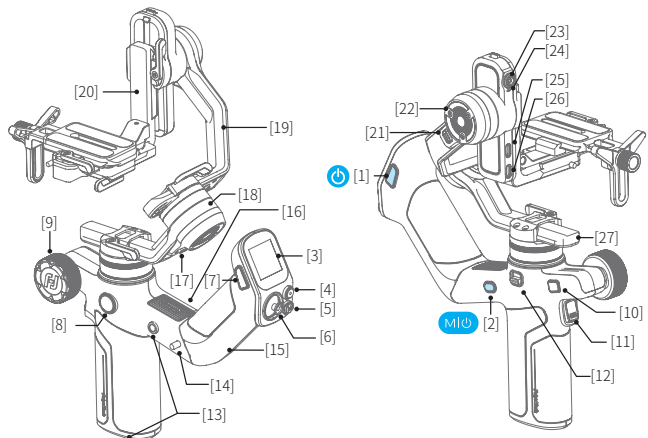
iOS



Android

1. Overview

* Camera/Smartphone not included.



- [1] Handle power button
- [2] Main body power button
- [3] Touch screen
- [4] Shutter button
- [5] Mode button
- [6] Joystick
- [7] F1 button
- [8] Knob function switching button
- [9] Multifunction knob
- [10] Photo/video button
- [11] Trigger button
- [12] Pan lock
- [13] 1/4 inch thread hole
- [14] Handle lock
- [15] Detachable handle

- [16] Indicator
- [17] Roll lock
- [18] Roll axis
- [19] Cross arm
- [20] Slide arm
- [21] Tilt lock
- [22] Tilt axis
- [23] AI tracking camera
- [24] AI tracking indicator
- [25] Extension port
- [26] Camera control port/USB-C power output port ①
- [27] Versatile arm

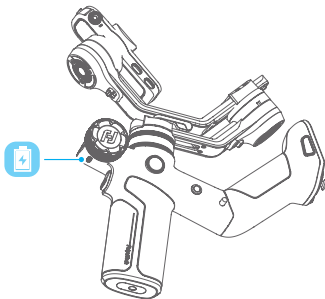
① Supports charging for shooting devices compatible with the USB power supply protocol

2. Getting started

2.1 Charging

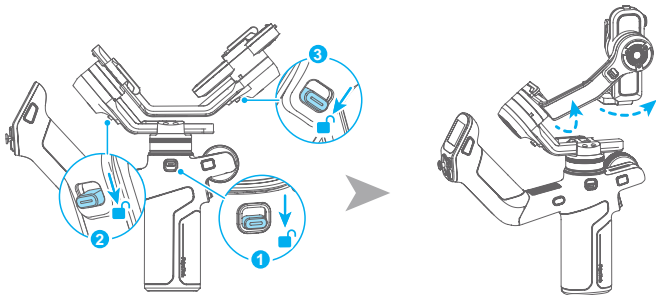
Please fully charge the battery before power on the gimbal for the first time.

Charging with USB-C cable, supports quick charge which charging power $\leq 18W$.



2.2 Adjust the gimbal to gimbal balancing position

The gimbal is folded by default, please unlock all the three axes and adjust the gimbal to **gimbal balancing position**, and then lock the three axes.



Gimbal folded position

Gimbal balancing position

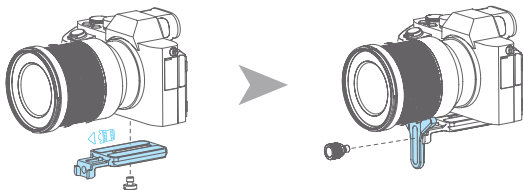
3. Mounting the shooting equipment

Before mounting the shooting equipment, make sure the camera is ready for shooting (Install the camera lens, and the lens cover should be removed, the memory card and battery needs to be inserted to the camera, and battery is fully charged) , complete all the steps which mentioned in chapter "2. Getting started" and the gimbal is adjusted to **gimbal balancing position**. Make sure the gimbal is **powered off** or **in sleep mode** before mounting the camera.

3.1 Mounting a Camera

3.1.1 Attach the quick release plate

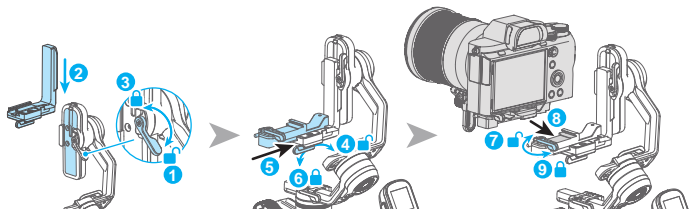
Attach the quick release plate to camera by tightening the screw. Install the lens holder on the quick release plate if needed, the rubber of the lens holder must be directly under the lens. It is recommended to use the lens holder when using a long or heavy lens.



If the camera doesn't have the 1/4-20 inch screw hole, please put the camera on mount adapter, which has 1/4-20 inch screw hole, and then follow the steps above to mount it.

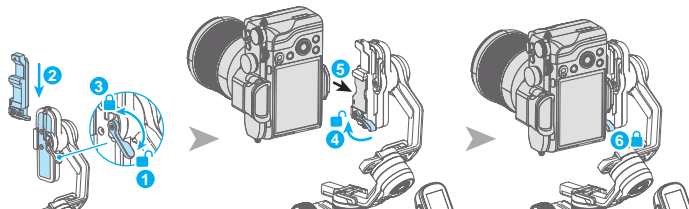
3.1.2 Horizontal mounting for camera

- ① Unlock the slide arm lock
- ② Slide the slide arm into the slot
- ③ Lock the slide arm lock
- ④ Unlock the slider lock
- ⑤ Slide the slider into the slot
- ⑥ Lock the slider lock
- ⑦ Unlock the quick release plate lock
- ⑧ Slide the camera (mounted on the quick release plate) into the slot
- ⑨ Lock the quick release plate lock



3.1.3 Vertical mounting for camera

- ① Unlock the slide arm lock
- ② Slide the slider into the slot
- ③ Lock the slide arm lock
- ④ Unlock the quick release plate lock
- ⑤ Slide the camera (mounted on the quick release plate) into the slot
- ⑥ Lock the quick release plate lock



3.2 Mounting an action camera

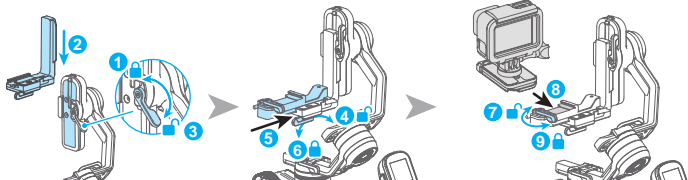
3.2.1 Attach the quick release plate

Attach the quick release plate to the 1/4-inch screw hole on the bottom. Tighten the camera fixed screw.



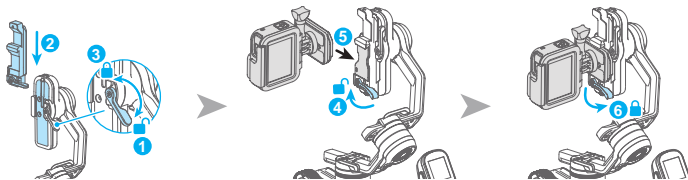
3.2.2 Horizontal mounting for action camera

- ① Unlock the slide arm lock
- ② Slide the slide arm into the slot
- ③ Lock the slide arm lock
- ④ Unlock the slider lock
- ⑤ Slide the slider into the slot
- ⑥ Lock the slider lock
- ⑦ Unlock the quick release plate lock
- ⑧ Slide the action camera (mounted on the quick release plate) into the slot
- ⑨ Lock the quick release plate lock



3.2.3 Vertical mounting for action camera

- ① Unlock the slide arm lock
- ② Slide the slider into the slot
- ③ Lock the slide arm lock
- ④ Unlock the quick release plate lock
- ⑤ Slide the action camera (mounted on the quick release plate) into the slot
- ⑥ Lock the quick release plate lock

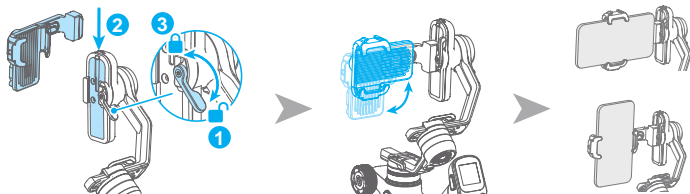


3.3 Mounting a smartphone

- ① Unlock the slide arm lock
- ② Slide the smartphone holder into the slot
- ③ Lock the slide arm lock

Before Mounting your phone, we recommend removing the phone case.
After attaching the smartphone holder, rotate it to the horizontal or vertical position, then open the holder and place your phone in the center.

Note: Before switching between horizontal or vertical mounting, the gimbal must be powered off or in sleep mode.



4. Gimbal balancing

Please balance the gimbal before shooting. Take camera mounting as an example. Make sure the camera and lens are ready for shooting, and the gimbal is powered off or in sleep mode before balancing.



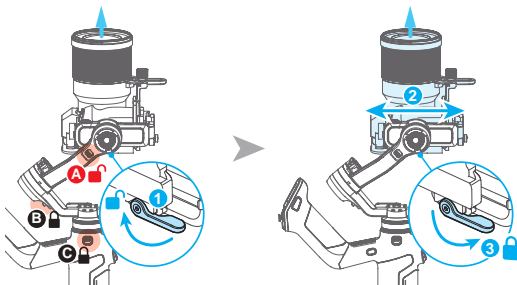
Tutorial Videos

It is recommended to hold up the camera first, then move the slide arm, cross arm and vertical arm.

4.1 Balancing the tilt axis

4.1.1 Balancing the vertical tilt

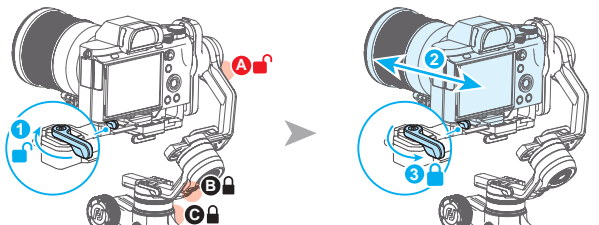
- (1) Unlock motor lock A and secure motor locks B and C.
- (2) Position the camera lens vertically upward.
- (3) Unlock ①, move ② in the opposite direction of the lens tilt until the lens remains vertically upward.
- (4) Lock ①, supporting the camera upward to ensure proper fixation.



4.1.2 Adjust depth for the tilt axis

- (1) Place the camera lens pointing horizontally forward.
- (2) Unlock ①, move ② in the opposite direction of the lens tilt until the lens remains horizontally forward.
- (3) Lock ①, supporting the camera to ensure proper fixation.

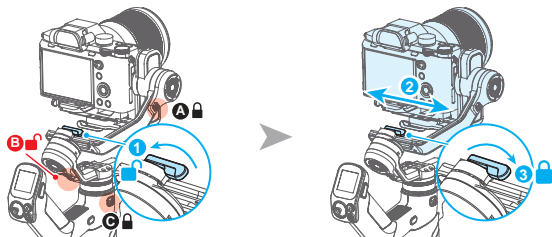
If the camera remains stationary at a tilt angle of about $\pm 45^\circ$, it indicates that the tilt axis has been balanced.



4.2 Balancing the roll axis

- (1) Unlock motor lock B and secure motor locks A and C. Observe the camera's tilt direction.
- (2) Unlock ①, move ② in the opposite direction of the lens tilt until the cross arm remains level, indicating it is balanced.
- (3) Lock ①.

If the camera remains stationary at a horizontal angle, it indicates that the roll axis has been balanced.



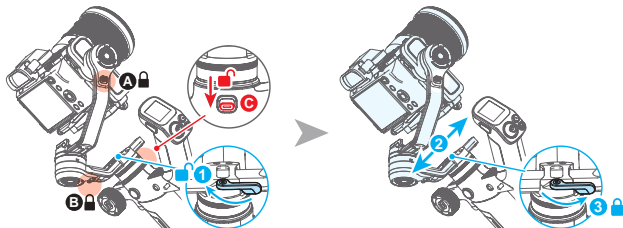
4.3 Balancing the pan axis

(1) Unlock motor lock **C** and secure motor locks **A** and **B**. Hold the handle and tilt the device to observe the camera's tilt direction.

(2) Unlock ① and move ② in the opposite direction of the lens tilt until the vertical arm stays still, indicating it is properly balanced.

(3) Lock ①.

If the camera remains stationary at a horizontal angle, it indicates that the yaw axis has been balanced.



5. Power ON/ OFF& Wake up

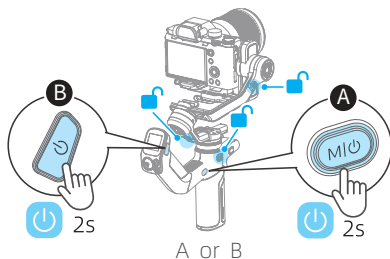
5.1 Power ON/ OFF

Before power on the gimbal, make sure you have balanced gimbal, and unlocked all the three axes. If you haven't unlocked all the 3 axes, gimbal will enter sleep mode to protect itself. Please single tap power button to wake up gimbal after unlocked all the 3 axes.

! Please set motor power first after powering on gimbal for the first time or after changing a new camera/lens.[\(Please refer to chapter 8.3.1\)](#)

Long press the power button and release it when you hear the beep sound to power on/off.

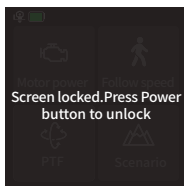
When assembled, the device can be powered on using either A or B. In separate mode, A and B must be powered on individually.



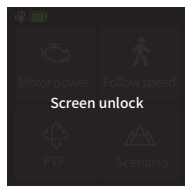
5.2 Lock/Unlock screen

Lock screen: Single tap the handle power button to lock screen.

Unlock screen: Single tap the handle power button again to unlock the screen.




Lock screen

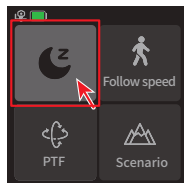


Unlock screen

5.3 Sleep/Wake up

Sleep: Double tap power button to enter sleep mode.

Wake up: Single tap power button or tap the  icon on the screen in sleep mode to wake up gimbal.



6. Function/Modes introduction

6.1 Follow modes introduction

① **PF** (Default mode)

Pan follow, only the pan axis follows the movement of user's hand.

② **PTF**

Pan and tilt follow, where both the pan and tilt axes follow the movement of user's hand, but roll axis does not.

③ **FPV**

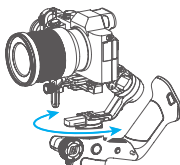
Pan, tilt and roll follow, where all 3 axes follow the movement of user's hand.

④ **Lock**

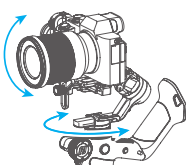
All 3 axes do not follow the movement of user's hand, gimbal keeps the direction of the camera fixed.

⑤ **FFW**

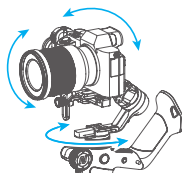
Flash follow, where all 3 axes follow the movement of user's hand in high follow speed.



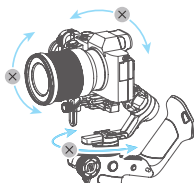
① PF



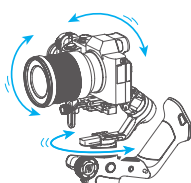
② PTF



③ FPV



④ Lock



⑤ FFW

6.2 Other function introduction

Auto rotation (Please refer to chapter 8.3.5)

Camera will auto rotate to shoot according to the rotation speed and direction that set by users. It can be used to achieve the image rotating scene which been used frequently in movie Inception.

Portrait mode (Please refer to chapter 8.3.7)

Enter portrait mode for recording portrait video or live streaming.

Selfie mode (Please refer to chapter 8.3.9)

The camera turns 180° horizontally, selfie shooting is available.

Track video

Record track video according to the waypoints which has been set.

Manual lock

Manually move camera to desired position, and hold for half a second. New tilt /pan positions are automatically saved.

7. App Connecting

Download the App

Scan the QR code to download the app, or search for "**Feiyu SCORP**", "**Feiyu ON**" in the App Store or Google Play.

* Feiyu SCORP: OS ≥ V13.0, Android ≥ V10.0

Feiyu ON: iOS ≥ V12.0, Android ≥ V8.0

Mount mirrorless camera, pocket camera or action camera on gimbal for shooting

Feiyu SCORP



iOS



Android

Mounting smartphone on gimbal for shooting

Feiyu ON



iOS



Android

7.1 Connect App

When mounting mirrorless camera, pocket camera, or action camera on gimbal for shooting, please use "**Feiyu SCORP**" App. When mounting smartphone on gimbal

for shooting, please use "Feiyu ON" App.
Follow the prompts to register for the first time.

7.1.1 Connect with Feiyu SCORP App

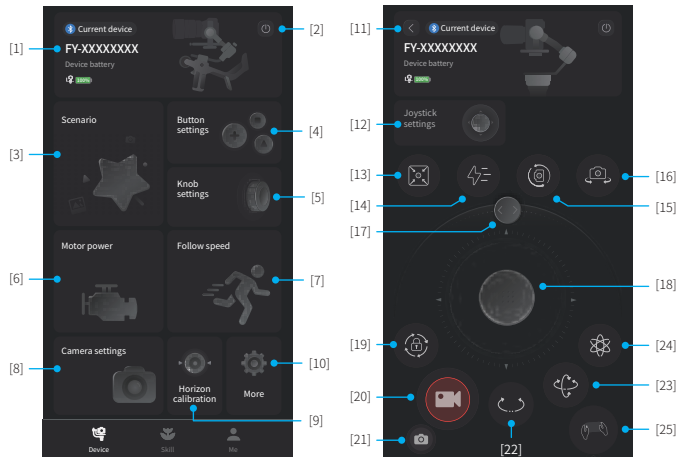
- (1) Turn on the gimbal
- (2) Turn on the smartphone Bluetooth, run Feiyu SCORP App, tap the top of the home page to connect gimbal.

After the connection succeed, it's easy to control gimbal via App, including control the pan and tilt axis angle with the virtual joystick, switch modes, set motor power/camera parameters/follow speed, set other functions, parameters, and update firmware.

7.1.2 Connect with Feiyu ON App

- (1) Turn on the smartphone Bluetooth, run Feiyu ON App, and App wil search gimbal automatically, follow the prompts to connect gimbal.
- (2) After the connection succeed, it's easy to control gimbal via App, including control the pan and tilt axis angle with the virtual joystick, switch modes, set motor power/camera parameters/follow speed, set other functions, parameters, and update firmware.

7.2 Function introduction of Feiyu SCORP App



[1] Gimbal control access

Display the product name and device battery of current connecting gimbal, tap to enter gimbal operation interface, which allows user to use virtual joystick to control gimbal, switch follow modes, recenter gimbal, adjust horizontal angle manually. When not connected to gimbal, prompt user to connect with gimbal.

[2] Disconnect device

Tap to disconnect current connecting device.

[3] Scenarios

Provide auto rotation (can be used to achieve the image rotating scene which been used frequently in movie Inception), panorama, timelapse (Motionlapse/Static timelapse/Hyperlapse) , track video and other usage scenarios for user.

[4] Button settings

Set the function when press and hold the trigger button.

[5] Knob settings

Set the control object for multifunction knob, can be set as control axes, control electronic focus, control focus motor.

Set damp, speed, smooth and sound for multifunction knob in "More".

[6] Motor power settings

Adjust tilt, roll, pan axes motor power manually or use auto tune function to tune the motor power automatically (Recommended).



Please set motor power first after power on gimbal for the first time or after change a new camera/lens.

[7] Follow speed

Select different preset gimbal follow speed profiles: Slow/Med/Fast, or custom follow speed and dead zone.

[8] Camera settings

Can set camera aperture, shutter speed and ISO parameters after connecting with camera.

[9] Horizon calibration

Calibrate the gimbal with the auto calibration function(Recommended) or adjust it manually (When not in FPV or FFW mode).

[10] More

Set boot silent, disable selfie, manual lock, check firmware information and update firmware, restore the default settings.

[11] Back

Tap to return to home page.

[12] Joystick settings

Can set the joystick speed for controlling pan/tilt axis, and joystick as pan axis/tilt axis inverted.

[13] Recenter

Tap to recenter the gimbal.

[14] Flash follow(FFW)

Tap to enter Flash follow.

[15] Portrait mode

Tap to enter portrait mode.

[16] Selfie mode

Tap to enter selfie mode.

[17] Adjust horizontal angle

Slide the slider to control roll axis to adjust the current horizontal angle.

[18] Virtual joystick

Use virtual joystick to control pan and tilt axis.

[19] Lock mode

Tap to enter lock mode.

[20] Shutter

Tap to take photo in photo mode.

Tap to start/stop recording in video mode.

[21] Switch between photo/video mode

Tap to switch between switch between photo/video mode

[22] Pan follow (PF)

Tap to enter pan follow (PF) mode.

[23] Pan and tilt follow (PTF)

Tap to enter pan and tilt follow (PTF) mode.

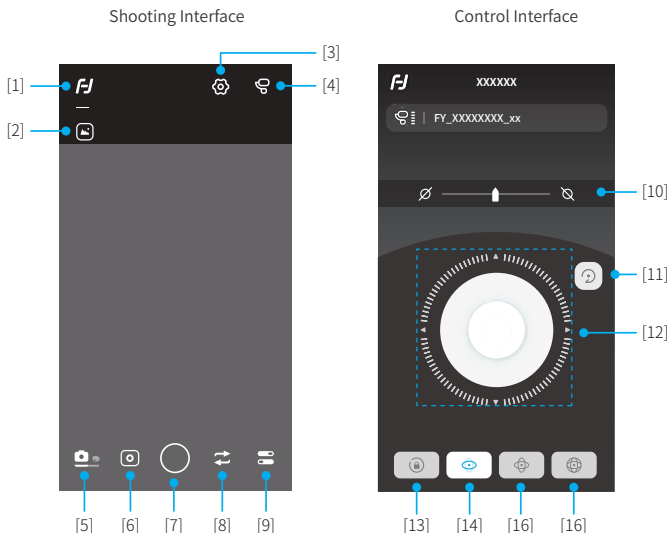
[24] FPV

Tap to enter FPV mode.

[25] Motion sensing mode

Tap to enter motion sensing mode which can control the pan and tilt axis to follow the movement of smartphone, can not switch follow modes in motion sensing mode (PF/PTF/FPV/Lock).

7.3 Function introduction of Feiyu ON App



[1] Back

Tap to return to previous menu.

[2] Album

Tap to enter album.

[3] Gimbal control

Tap to enter gimbal remote control interface, which allows user to use virtual joystick to control gimbal and switch follow modes.

[4] Gimbal information

Tap to check current connecting gimbal and its battery, user can also update firmwares for gimbal.

[5] Switch between photo/video mode

Tap to switch between switch between photo/video mode.

[6] Switch usage scenarios

In photo mode: Free panorama / Ultra-wide angle / 180° panorama / 360° panorama / Normal photo / Overlapping image / Light rail mode / Quick panorama.

In video mode: Static timelapse / Track timelapse / Dolly zoom / Normal video / Light rail video / Kuaishou Live.

[7] Shutter

Tap to take photo in photo mode.

Tap to start/stop recording in video mode.

[8] Switch between front and back cameras

Tap to switch between front and back cameras.

[9] More

Support photo timer, beauty, flash, auxiliary line, peak assist, overexposure tips, filter, AI and gesture settings.

[10] Horizontal angle

Slide the slider to control roll axis to adjust the horizontal angle.

[11] Recenter

Tap to recenter the gimbal.

[12] Virtual joystick

Use virtual joystick to control pan and tilt axis.

[13] Lock Mode

Tap to enter lock mode.

[14] Pan follow (PF)

Tap to enter pan follow (PF) mode.

[15] Pan and tilt follow (PTF)

Tap to enter pan and tilt follow (PTF) mode.

[16] FPV

Tap to enter FPV (All follow) mode.

8. Operation

8.1 Button operation



Main body power button / M button

Long press: Power on/Power off

Single tap: Wake up(In sleep mode)/Display battery levels of the gimbal and handle (When powered off)

Double tap: Enter sleep mode



Handle power button

Long press: Power on*/Power off*

Single tap:

(1) Lock/Unlock screen (In home page)

(2) Return to home page (In other pages)

(3) Battery Level Display (When powered off)

Double tap: Enter FFW mode

Long Press: Enter motor power auto tuning

*When the handle is detached, it only controls the handle.



Handle M button

Single tap: PF mode(Default) /PTF/FPV (Switch in turn)

Long press for 3 seconds: Enter the auto tune menu

Tap five times: Horizon calibration



Trigger button

Single tap: Face tracking ☆

Double tap: Recenter (in non-selfie mode) / Selfie recenter (in selfie mode)

Triple tap: Enter/Exit selfie mode (Pan axis turn 180°)

Press and hold: Lock mode (Release to exit)

You can custom the function via App



Joystick

Push:

(1) Control the movement of the tilt and pan axes.

(2) Control album ☆



Shutter button

Camera Connected

Press half way: Focus

Single tap (Fully): Start/stop recording

Long press (Fully): Take photo

Phone Connected

Press half way: Focus ☆

Single tap (Fully): Shutter

Long press (Fully): Switch between video/ photo mode ☆



Photo/video button

Camera Connected

Single tap: Start/stop recording

Long press : Take photo

Phone Connected

Single tap: Shutter

Long press: Switch between video/ photo mode ☆



F1 Button

Single tap: Enter/exit album ☆

Double tap: Enter/exit portrait mode

Triple Tap: AI power on/off

Long Press: Enter/Exit AI tracking (With AI Power enabled)



Multifunction knob

Turn:

(1) Control the movement of the roll, tilt and pan axes.

(2) Control electronic focus/zoom (The smartphone requires the use of the Feiyu ON App)

(3) Control focus motor.

(4) Adjust the parameter in the touch screen.

Set current control option as option (1) or (2) or (3) through long press the knob function switching button or swipe up in home page.



Knob function switching button

Single tap:

- (1) Switch the control object while controlling the movement of the 3 axes (Tilt/Pan/Roll)
- (2) When in electronic focus/zoom control state, single tap to switch between electronic focus and electronic zoom ☆

Long press: Switch the control options of Multifunction knob in turn (The movement of the 3 axes, electronic focus/zoom)

Key Combinations:

A: Joystick down + triple tap the handle power button: Clears all Bluetooth pairing information for the phone, detachable handle, and Bluetooth remote. After reboot, you can re-pair devices.

B: Joystick up + triple tap handle power button: Clears all Bluetooth pairing information for the mirrorless camera. After reboot, you can re-pair the camera.

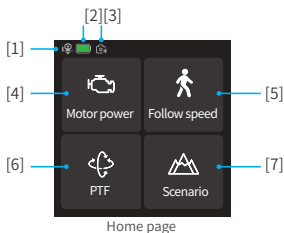
C: M button + F1 button: Press together to force the handle to power off n within 1 second (when detached).

Note:

(1) When using a camera or the original camera app on your smartphone to capture photos or videos, some features may require specific camera or smartphone support. You can visit the official website to check the list of compatible devices: <https://www.feiyu-tech.com/feiyu-scorp-mini-3-pro/>

(2) We recommend using this product in conjunction with the Feiyu ON / Feiyu SCORP App. Operations marked with a ☆ are designed for use with smartphones paired with the Feiyu ON App.

8.2 Touch screen operation



[1] The current landscape/portrait mode status



Landscape mode



Portrait mode



[2] Current battery level

Show the current battery level of gimbal.



[3] Bluetooth connection

Icon appears after Bluetooth is connecting. And the icon won't be shown if Bluetooth disconnect.



Camera Bluetooth connected



GoPro Bluetooth connected



The smartphone has connected to the gimbal's Bluetooth



[4] Motor power

Use auto tune to adjust the motor power automatically, or adjust motor power for each axis manually.



[5] Follow speed

Users can select different gimbal follow speed profiles, or customize follow speed.



[6] Follow mode

Select gimbal follow mode.



PF: Pan follow, only the pan axis follows the movement of user's hand.



PTF: Pan and tilt follow, where both the pan and tilt axes follow the movement of user's hand, but roll axis does not.



FPV: Pan, tilt and roll follow, where all 3 axes follow the movement of user's hand.



Lock: All 3 axes do not follow the movement of user's hand, gimbal keeps the direction of the camera fixed.

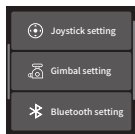


FFW: Flash follow, where all 3 axes follow the movement of user's hand in high follow speed.



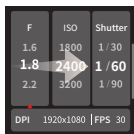
[7] Scenario

Select gimbal usage scenario (timelapse, auto rotation, panorama, portrait mode, selfie mode, track video, etc.)



Swipe from right to left

Joystick, gimbal and more settings



Swipe from left to right

Shooting parameters settings

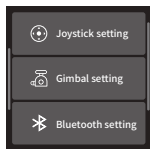


Swipe up

Multifunction knob settings

- **Return to previous menu:** Swipe to right

Swipe from right to left



- Joystick settings

Set the joystick speed for controlling pan/tilt axis, provide joystick direction switch.

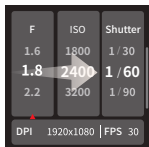
- Gimbal settings

Including disable selfie, manual lock, and horizon calibration settings.

- More

Silent switch, select language, restore the default settings, check version information.

Swipe from left to right



- Camera settings

Set aperture, ISO, shutter speed and show current resolution, fps after connecting with camera.

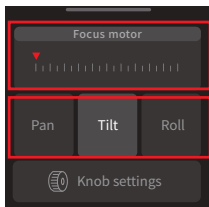
Swipe up



- Knob settings

Set the control object for multifunction knob, can be set as control axes, control electronic focus, control focus motor.

Set damp, speed, smooth and sound for multifunction knob in "Knob settings".




Electronic focus/focus motor control pane

Axes control panel

Set parameters for multifunction knob

8.3 Function operation

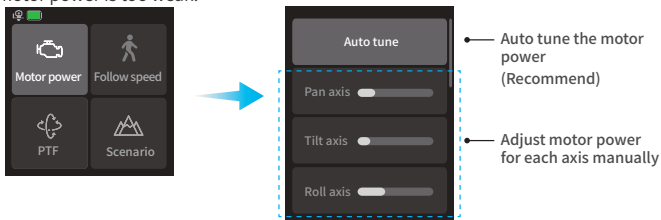
8.3.1 Motor power settings

 Please set motor power first after powering on gimbal for the first time or after changing a new camera/lens.

Auto tune: Gimbal auto tune the motor power according to the load.

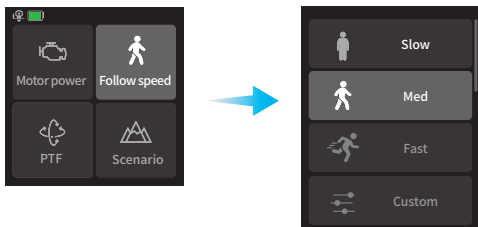
Adjust motor power manually: Adjust the motor power for each axis manually according to the load.

Tips: If the gimbal is vibrating in high frequency, it means the motor power is too strong. If the gimbal is shaking in low frequency and large amplitude, it means the motor power is too weak.



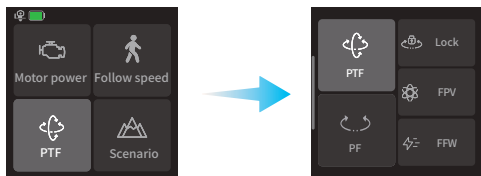
8.3.2 Follow speed settings

Tap "Follow speed" in home page, and select different preset gimbal follow speed profiles: Slow/Med/Fast, or custom follow speed and dead zone.



8.3.3 Follow mode settings

Tap the lower left icon in home page to select follow modes.

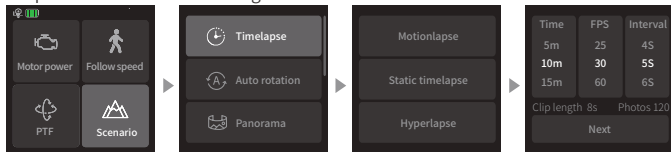


Follow mode

- PF: Pan follow, only the pan axis follows the movement of user's hand.
- PTF: Pan and tilt follow, where both the pan and tilt axes follow the movement of user's hand, but roll axis does not.
- FPV: Pan, tilt and roll follow, where all 3 axes follow the movement of user's hand.
- Lock: All 3 axes do not follow the movement of user's hand, gimbal keeps the direction of the camera fixed.
- FFW: Flash follow, where all 3 axes follow the movement of user's hand in high follow speed.

8.3.4 Timelapse

Select “Scenario” in home page, then select “Timelapse”. Select motionlapse/static timelapse/hyperlapse according to what you need, and follow the tips to set the parameters to start shooting.



Motionlapse: Shoot timelapse photography according to the waypoints which has been set.

Static timelapse: Shoot timelapse photography with a fixed shooting angle.

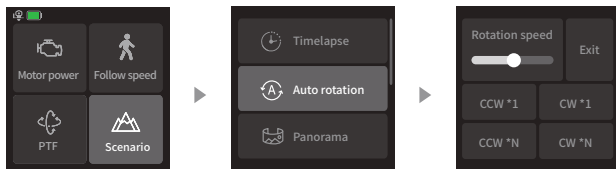
Hyperlapse: Shoot timelapse photography while moving.

8.3.5 Auto rotation

Can be used to achieve the image rotating scene which been used frequently in movie Inception.

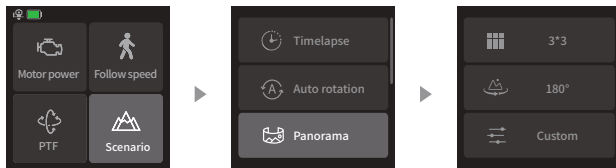
Select “Scenario” in home page, then select “Auto rotation”. The tilt axis will rotate 90° counterclockwise to make the camera pointing upward. Gimbal start to rotate after setting the rotation speed, direction, and rotational number.

Exit: Swipe from left to right to return to previous menu to exit auto rotation mode.



8.3.6 Panorama

Select “Scenario” in home page, then select “Panorama”. Choose a panorama mode to start shooting a series of interconnecting still images. Users can then generate a panorama using image processing software.



3*3: Take 3 images above in every three layers (9 images in total).

180° : Take 4 lateral images.

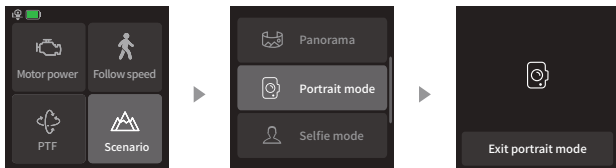
Custom: Custom the shooting angle for pan/tilt axis, focal length, overlap and interval parameters to take panorama photos.

8.3.7 Portrait mode

Select “Scenario” in home page, then select “Portrait mode” . The tilt and pan axis will rotate 90° counterclockwise to make the camera pointing upward.

Hold the handle to make the lens horizontal to the ground to shoot in portrait mode.

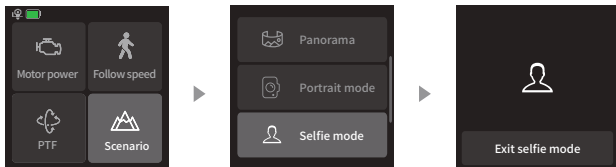
Exit: Tap the icon at the bottom of the screen to exit.



8.3.8 Selfie mode

Select “Scenario” in home page, then select “Selfie mode” . Gimbal turn 180° horizontally so that the camera faces you.

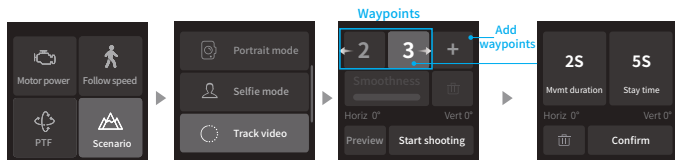
Exit: Tap the icon at the bottom of the screen to exit.




Disable selfie: Swipe from left to right in home page, then select “Gimbal settings” , enable the disable selfie switch, then the selfie mode will not be entered if the trigger button is tapped three times.

8.3.9 Track video

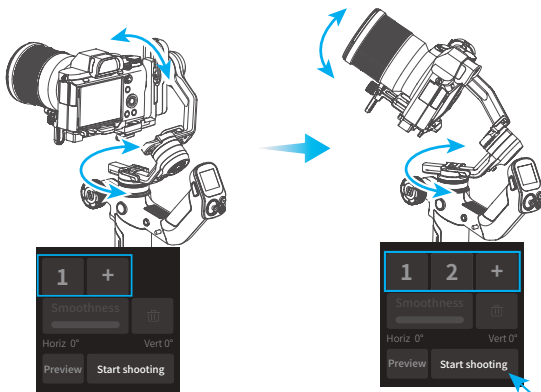
Select “Scenario” in home page, then select “Track video” , capture video with up to 10 waypoints.



Use joystick or manually move camera to desired position, tap “+” icon to confirm the waypoint, repeat to add another waypoint. Track video is designed to capture video with up to 10 waypoints.

Select a waypoint number to check the position for this waypoint quickly, and tap “” icon to delete it.

After setting up the smoothness, tap “Start shooting” to start shooting.



The shooting progress will show up on the screen, if need to stop it midway, tap "Stop shooting" to stop it.

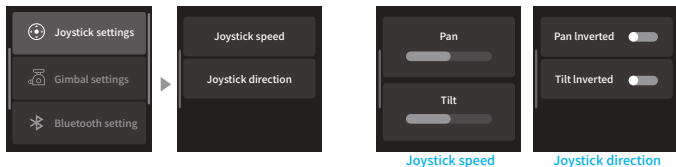
After the shooting complete, tap "Confirm and return" to exit.

8.3.10 Joystick settings

Swipe from right to the left on the home page and select 'Joystick Settings'.

Joystick Speed: Set the joystick speed for controlling pan/tilt axis.

Joystick Direction: Enable/disable inverted control of pan/tilt axis.



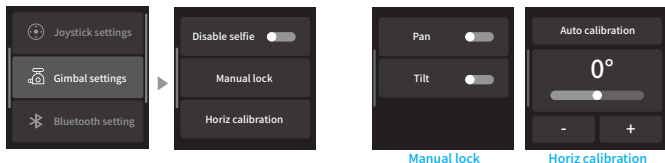
8.3.11 Gimbal settings

Swipe from right to the left on the home page and select 'Gimbal settings'.

Disable selfie: Enable/disable the gimbal's button control for the selfie mode.

Manual lock: Enable/disable the manual lock for pan/tilt axis.

Horiz calibration: Automatically/manually calibrate the horizontal angle.



8.3.12 Bluetooth settings


Connect the camera/GoPro Camera

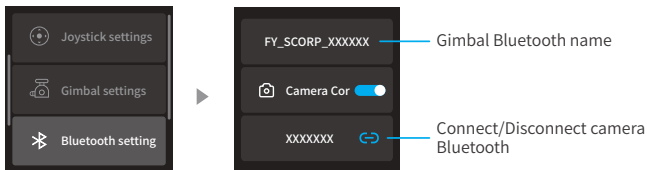
Swipe from right to the left on the home page and select "Bluetooth Settings."

Enable "Camera Control"

Turn on your camera's Bluetooth.

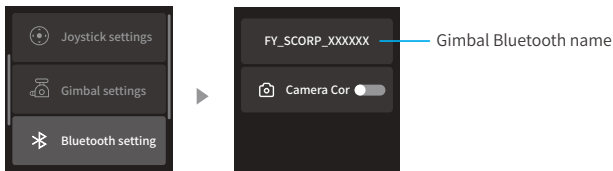
On the gimbal screen, choose the corresponding camera Bluetooth name for connecting.

Once the connecting is successful, an icon  will appear at the top of the main page.



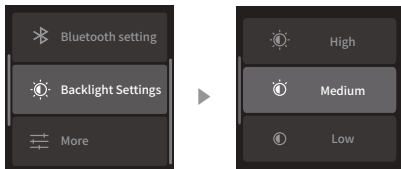
Connect the smartphone

Swipe from right to the left on the home page and select "Bluetooth Settings" to view the gimbal's Bluetooth name. Turn on your phone's Bluetooth, locate the gimbal's Bluetooth name for connecting. Once the connecting is successful, an icon will appear at the top of the main page.



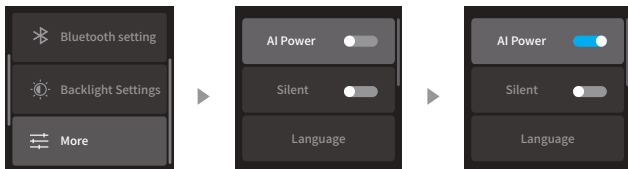
8.3.13 Backlight settings

Swipe from right to the left on the home page, and select "Backlight Settings" to adjust the screen's backlight brightness.



8.3.14 AI Tracking

Triple tap the F1 button can turn AI power on or off. Alternatively, swipe from right to the left on the home page of screen, select "More Settings" to toggle the "AI Power" switch on or off.



After turning on the AI power, the tracking module indicator light will remain solid red.

- AI power is now on
- AI tracking is active



Under AI Power-On State, the following controls are available:

AI Gesture Control



OK gesture (Left or right hand): Start tracking/Stop tracking

Start tracking with the green light stays on. Repeat this gesture, stop tracking, enter standby mode with the red light stays on. Two gestures must be separated by 3 seconds.



Thumbs opposite direction: Stop tracking

Stop tracking, enter standby mode with the red light stays on.



Spread palm (Left or right hand): Shutter

In photo/video mode: Take photo or start recording after a 3-second countdown with beep sound.

After started the recording, do the gesture again to stop recording.



Double L-Shaped gestures: Custom framing

Start framing, green light blinks fast. When the subject moves to the desired position, perform this gesture again to complete framing, and the green light stays on.



Two thumbs up gesture: Disable gesture control

In tracking mode, this gesture can disable the gesture control function. Once disabled, AI tracking can still be controlled via the buttons.

Button control

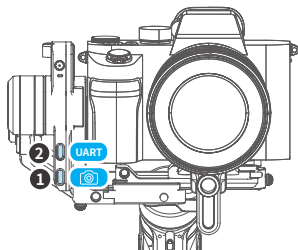
Long press F1 button: Start tracking/Stop tracking

Triple tap F1 button: AI power on/off

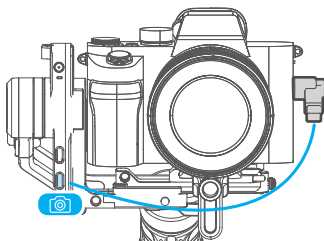
Double tap Trigger button: Stop tracking

8.4 Control ports

There is a camera control port and extension port on the fixed plate, to control camera and other extension devices, such as focus motor, etc.




- ① Camera control port
- ② Extension port (connect focus motor and etc.)



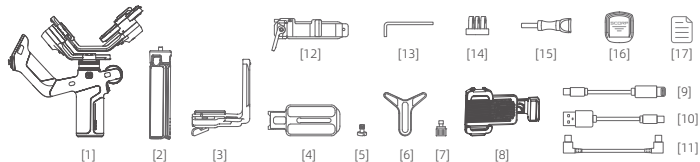
Connect camera with shutter cable

9. Specifications

Product name	Feiyu SCORP Mini 3 Pro Handheld Gimbal for Camera
Product model	FeiyuSmi3p
Rotatable Range	Tilt: +168° ~ -145° (±3°)
	Roll: +70° ~ -245° (±3°)
	Pan: 360°
Controllable Range	Tilt: +137° ~ -60°
	Roll: +40° ~ -40°
	Pan: 360°
Size (Mainbody)	About 228.6×240.8×55.2mm (Folded:)
Weight (Mainbody)	About 1000g (Not including tripod)
Payload Capability	About 2000g (Well-balanced)
Battery life	≤ 14 Hours (Motion State)
Battery	4500mAh
Operating Voltage	6.8V-8.4V
Compatible Cameras	Mirrorless camera and pocket camera (Sony, Canon, Nikon, Panasonic, etc. For specific camera and lens compatibility, please refer to the official website's compatibility list.), action camera like GoPro, and smartphone (Width: 52mm~88mm, thickness: < 9.5mm)

 Bluetooth name: FY_SCORP_M3P_XX

List



- [1] Main body x1
- [2] Tripod x1
- [3] Fixed plate x1
- [4] Quick release plate x1
- [5] Camera fixed screw x1
- [6] Lens holder x1
- [7] Lens holder screw x1
- [8] Smartphone holder (with fan) x1

- [9] Type-C to Lightning Cable x1
- [10] Type-C Cable x1
- [11] Type-C to Type-C Cable x1
- [12] Slider x1
- [13] Hex key x1
- [14] GoPro adapter x1
- [15] Long thumb screw x1
- [16] Dust Cover x1
- [17] Manual x1

Notice

1. Make sure motor spinning is not blocked by external force when the product is power on.
2. The product DO NOT contact water or other liquid if the product is not mark waterproof or splash-proof. Waterproof and splash-proof product DO NOT contact sea water or other corrosive liquid.
3. DO NOT disassembly the product except marked detachable. It need send to FeiyuTech after-sales or authorized service center to fix it if you accidently disassembly and cause abnormal work. The relevant costs are borne by user.
4. Prolonged continuous operation may cause the product surface temperature to rise, please operate carefully.
5. DO NOT drop or strike the product. If the product is abnormal, contact Feiyu After-sales support.

Storage and Maintenance

1. Keep the product out of the reach of children and pets.
2. DO NOT leave the product near heat sources such as a furnace or heater. DO NOT leave the product inside of a vehicle on hot days.
3. Please storage the product in dry environment.
4. DO NOT overcharge or overuse the battery, otherwise it will cause damage to the battery core. If does not use the product for a long time, please charge it at least once within one month.
5. Never use the product when the temperature is too high or too low.

IC warning

This device contains license-exempt transmitter(s)/re-ceiver(s) that comply with Innovation, Science and Economic Development Canada's license-exempt RSS(s). Operation is subject to the following two conditions:

- (1) This device may not cause interference.
- (2) This device must accept any interference, including interference that may cause undesired operation of the device.

Le présent appareil est conforme aux CNR d'Industrie Canada applicables aux appareils radio exempts de licence. L'exploitation est autorisée aux deux conditions suivantes :

- (1) l'appareil ne doit pas produire de brouillage, et
- (2) l'utilisateur de l'appareil doit accepter tout brouillage radioélectrique subi, même si le brouillage est susceptible d'en compromettre le fonctionnement.

IC Radiation Exposure Statement

This equipment complies with the limits of exposure to IC radiation defined for an uncontrolled environment. Cet équipement est conforme aux limites d'exposition aux rayonnements de la IC établies pour un environnement non contrôlé.

FCC regulatory conformance

This device complies with Part 15 of the FCC Rules. Operation is subject to the following two conditions:

- (1) This device may not cause harmful interference.
- (2) This device must accept any interference received, including interference that may cause undesired operation.

NOTE

This equipment has been tested and found to comply with the limits for a Class B digital device, pursuant to part 15 of the FCC Rules. These limits are designed to provide reasonable protection against harmful interference in a residential installation.

This equipment generates uses and can radiate radio frequency energy and, if not installed and used in accordance with the instructions, may cause harmful interference to radio communications. However, there is no guarantee that interference will not occur in a particular installation. If this equipment does cause harmful interference to radio or television reception, which can be determined by turning the equipment off and on, the user is encouraged to try to correct the interference by one or more of the following measures:

- Reorient or relocate the receiving antenna.
- Increase the separation between the equipment and receiver.
- Connect the equipment into an outlet on a circuit different from that to which the receiver is connected.
- Consult the dealer or an experienced radio/TV technician for help.

NOTE

The manufacturer is not responsible for any radio or TV interference caused by unauthorized modifications to this equipment. Such modifications could void the user's authority to operate the equipment.

RF Exposure

This equipment complies with FCC radiation exposure limits set forth for an uncontrolled environment.



Warning: Please read the user manual carefully before use. Improper use of this product may cause damage and pose a risk to your safety.

- Keep small cells and batteries which are considered swallowable out of the reach of children.
- Swallowing may lead to burns, perforation of soft tissue, and death. Severe burns can occur within 2 h of ingestion.
- In case of ingestion of a cell or battery, seek medical assistance promptly.

This document is subject to change without notice.

Manufactured by: Guilin Feiyu Technology Incorporated Company
Website: www.feiyu-tech.com
E-mail: support@feiyu-tech.com
Tel: +86 773-2320865

