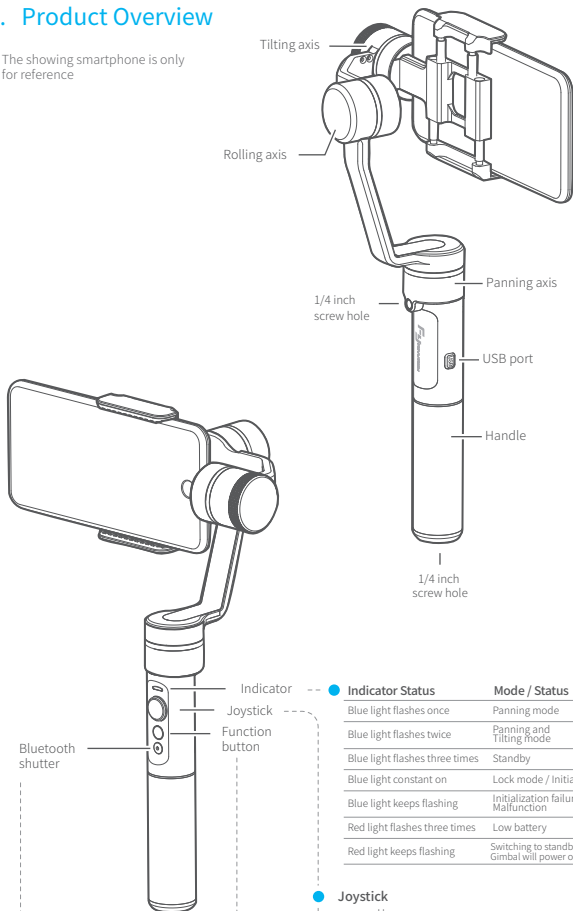




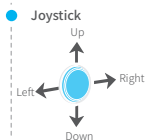
3-Axis Stabilized Handheld Gimbal
for Smartphone

1. Product Overview

* The showing smartphone is only for reference



Indicator Status	Mode / Status
Blue light flashes once	Panning mode
Blue light flashes twice	Panning and Tilting mode
Blue light flashes three times	Standby
Blue light constant on	Lock mode / Initializing
Blue light keeps flashing	Initialization failure / Malfunction
Red light flashes three times	Low battery
Red light keeps flashing	Switching to standby mode/ Gimbal will power off



- **Function Button**
- You can use the function button to switch the working mode, power on or power off the gimbal.
Please refer to "Modes / Functions".

● **Bluetooth Shutter** Bluetooth name: FY_SPLive_xx

Tips: the shutter button is only functional when the gimbal is connect with Smartphone App.

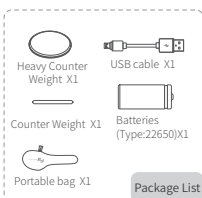
Download APP

Download "Feiyu ON" and install it.

(1) iOS version:



(2) Android version:



2. User Guide

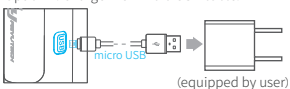
Attention!

- (1) Please install the smartphone before powering on the gimbal
- (2) When not in use, turn off the gimbal and then remove the smartphone

1 Charging

Please make sure the battery is fully charged before you use the gimbal for the first time.

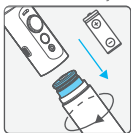
Option 1: Charge with micro USB cable.



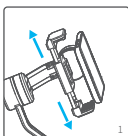
Option 2: remove the battery and charge the battery with charger (equipped by user).

2 Install the battery

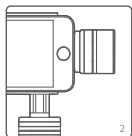
Remove the handle and insert one 22650 battery into it.



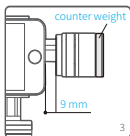
3 Install the smartphone



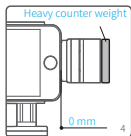
Attach the smartphone with the quick-release adapter, and ensure it is secure.



Without counter weight
Phone weight < 165g
Such as: iPhone 5 / 5s



With counter weight
180g < Phone weight ≤ 194g
Such as: iPhone 6s / 6

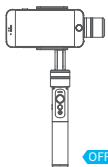


With Heavy counter weight
Phone weight > 194g
Such as: iPhone 7/7 Plus / 6 Plus

▲ Tips: Please take off the protective casing of the smartphone before installation.

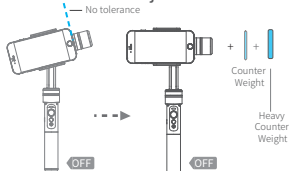
*If it is not balanced after you finished above operation instructions, please follow step 4 to balance it again.

4 Balance Adjustment



Best Balance

How to balance adjustment



If there is no tolerance between smartphone and tilting axis, but the smartphone still inclines to the left, please replace the heavy counter weight or add the 1mm counter weight.

If there is no tolerance between smartphone and tilting axis, but the smartphone still inclines to the right, please replace the light counter weight or remove the 1mm counter weight.

5 Power on / off

Power on: Press and hold function button until the green light is on.

Power off: Press and hold function button until the red light changes from quick flashing to always on.

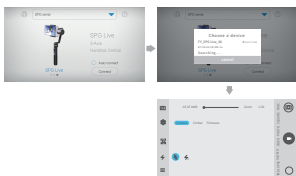


Attention: Turn the gimbal on after the phone has been secured properly.

In case of low battery, the indicator will flash red 3 times every 5 seconds. Please charge SPG Live or replace the battery.

6 Connecting App

Start the app on your smartphone, follow the instructions to connect the smartphone with gimbal via Bluetooth.



3. Modes / Functions

Working Modes

Panning Mode

Tilting and rolling direction are fixed, and the camera lens moves according to the hand movement of the user.

Panning and Tilting Mode

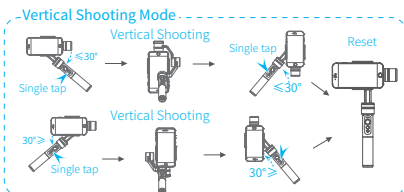
The rolling direction is fixed, and the camera lens moves according to the hand movement of the user.

Lock Mode

The orientation of the camera is fixed.

Vertical Shooting

* Applicable to the firmware version 1.46 and above.



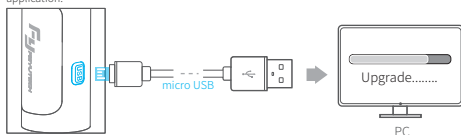
Mode / Function Operation Instructions

Function Button	Function	Explanation
Single tap	Panning Mode / Lock Mode	Single tap to switch between panning mode and lock mode
Double tap	Panning and Tilting Mode	Under panning and tilting mode, single tap to switch to lock mode
Triple tap	Rotate 180° in horizontal	Make the lens rotate 180°
Quadruple tap	Reset	Reset the tilting axis of the gimbal to initial orientation and initial mode
Long press until the red light flashes quickly	Standby	Single tap again to awake the gimbal, or triple tap to initialize the gimbal

4. Firmware Upgrade

(1) Option 1: connect the gimbal with PC via micro USB cable, and then upgrade the firmware.

Please visit the official website www.feiyu-tech.com to download the relevant programs for upgrading, including USB driver, firmware upgrade software and product firmware, and install the relevant software, decompress the firmware files for standby application.



(2) Option 2: connect the gimbal with Smartphone via bluetooth, and then upgrade the firmware.

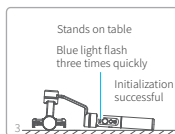
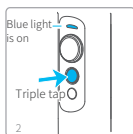
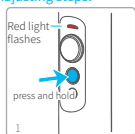


5. Gimbal initialization

You can initialize your gimbal when:

- (1) when camera is not level
- (2) if not used for a long period of time
- (3) in case of extreme temperature variations

Adjusting steps:



6. Parameters

Titling Angle	320°	Titling Increments	min 2°/s max 75°/s
Rolling Angle	320°	Panning Increments	min 3°/s max 150°/s
Panning Angle	360°	Usage time	7 Hours
Adaption	iPhone series / HUAWEI P9 / HUAWEI P9 Plus / Mi 5 / MEIZU MX6 / SAMSUNG NOTE 5 / S7 or other smartphones with the similar dimensions		
Weight	355g (not including battery and smartphone)		

DISCLAIMER

Prohibit any user for any illegal purpose. Users will be responsible for all behaviors of purchase and use products.

The Company assumes no liability for any risks related to or resulting from the debug and use of this product (including the direct, indirect or third-party losses).

For any unknown sources of using, we will not be at any services.

The updating and changes of product firmware and program may cause changes in function descriptions in this user manual, please read the instructions carefully before upgrading the firmware and use the corresponding user manual.

You can get the latest user manual from the official website: www.feiyu-tech.com

Feiyu Tech reserves the right to amend this manual and the terms and conditions of use the product at any time.

Attention

- Please correctly assemble the gimbal in accordance with the diagram.
- Please install the iPhone before powering on the gimbal.
- When the gimbal is not in use or placed on the table, please ensure it is powered off.

Create More Possibilities



For more information, please visit our official website: www.feiyu-tech.com
Support Email: service@feiyu-tech.com

Due to software and hardware improvements, your actual product might differ from the descriptions and pictures in this user manual. You can get the latest user manual from the official website.



www.feiyu-tech.com