

G360 Gimbal

Firmware Upgrade Manual

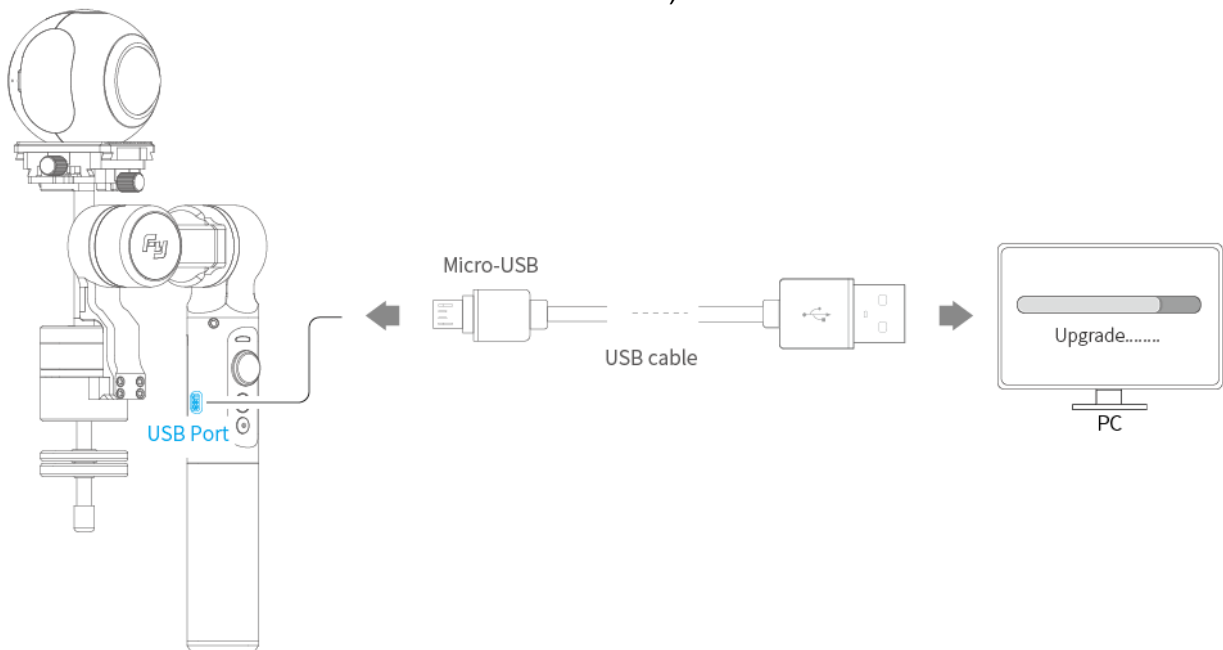
Attention :

- Please install the batteries before upgrading.
- Please upgrade the gimbal following the steps in the manual.
- The upgrade software is compatible with the Windows operation system, including Window XP / 7 / 8 / 8.1 / 10

If you want to upgrade it in Mac, Please kindly download the upgrade software and USB driver for Mac from our website.

- If you want to get the current firmware version of the gimbal, please do the operations from step 1~7.

1. Download the USB driver from FeiyuTech official website <http://www.feyu-tech.com> and install it in the computer. Then download the upgrade software and the firmware for G360, unzip them for the following steps.
2. After installing the USB driver successfully, put the battery into the G360 (Please kindly Keep G360 off until Step7).
3. Please refer the following connection diagram, connect the USB cable with USB port of the computer and the gimbal. Check the port number in device manager (If the port number is more than COM10, please modify it to the available number which is within COM10).

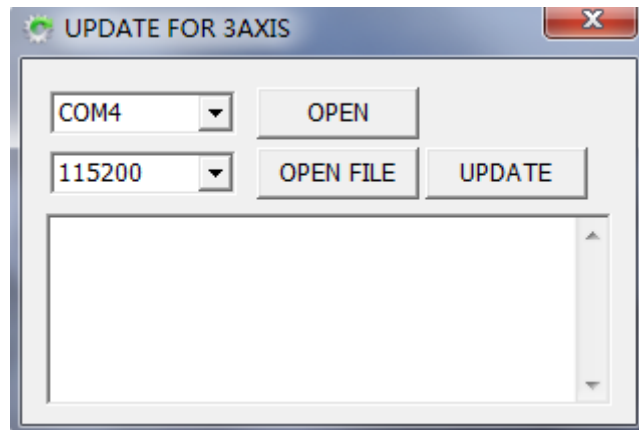


4. Run the upgrade software——“Gimbal-Update-3AXIS”directly if you use a PC with Windows XP/7/8/8.1 .

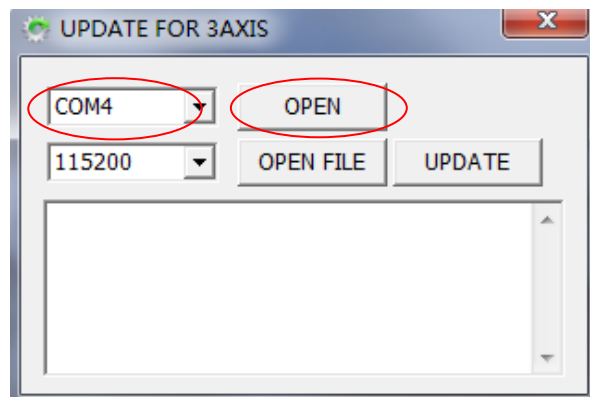


If you have a PC with Windows10 operation system, please right click the icon of the software ,choose “Trouble shoot compatibility”---”Try the recommended settings”---”test program”, Run the upgrade software in compatibility mode.

5. Software interface is shown in following picture.:



6. Choose the right port number and baud rate,such as 115200, then click **OPEN** button to open the com port.(The port number should be the same as in step 3).

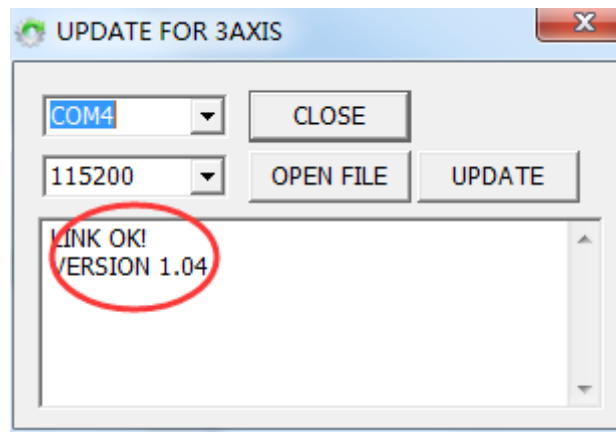


7. Long press the function button, The connection between the gimbal and the computer will be established automatically, The connection status and the

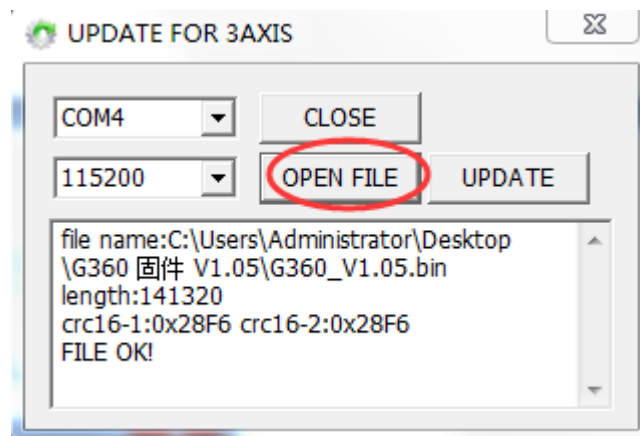
current version show up(For example, "LINK OK! VERSION 1. 04") , Keep holding the function button for 2~3 seconds after "LINK OK" showing up.

Release it, the indicator will alternately flashing blue and red, Which means the power is ready and the connection is done.

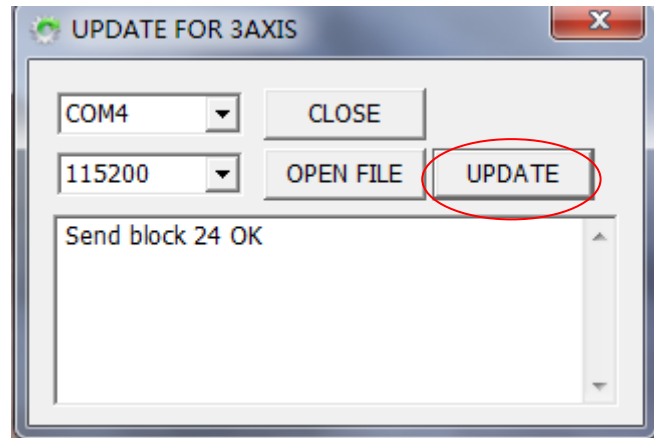
(Tips: if you can't see that the indicator alternately flashing blue and red, please long press the function button for 2 seconds again.)



8. Click on **OPEN FILE** button and choose the right firmware for the G360.



9. Click on **UPDATE** button to start upgrade, the process will display on the software.



10. After all the blocks of the firmware are completely sent , please click Confirm button to finish the upgrade. Close the software then remove the USB cable. Long press the function button of the gimbal to power off. All the upgrade is done.



—— END ——

Note: We reserve the right to change this manual at any time! And the newest edition will be shown on our website www.feiyu-tech.com.