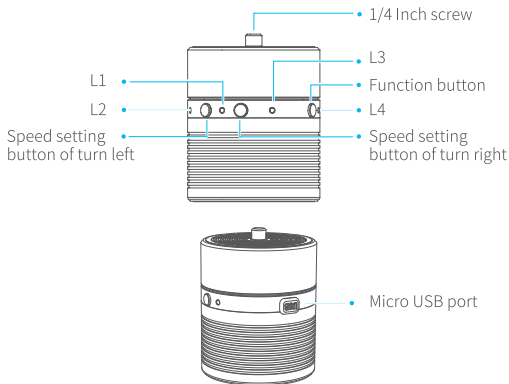




Autorotation Stand

Guilin Feiyu Technology Incorporated Company

Product Overview



Micro USB cable



T-adaptor



Pole screw



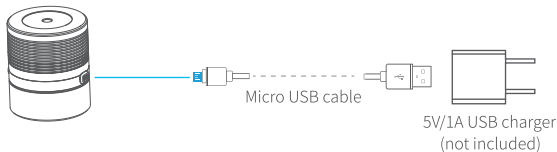
3M adhesive padx2

User Guide

1. Charging

- Please fully charge the battery before powering on the autorotation stand for the first time

This product charge with micro USB cable



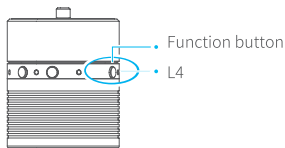
- ▲ Note: when L4 starts flashing three times every three seconds, the battery is low and need to recharge with a 5V/1A Micro USB cable.

2. Operation settings

● Power on / off

Power on: long press the function button and release it when the L4 lights in blue and you hear a tone.

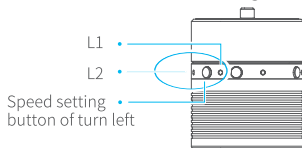
Power off: long press the function button and release it when the L4 changes from quick flashing to constant in red and you hear a tone.



⚠ "If changing to a shooting device with a different weight, please double-click the function button (prompting voice: two beeps) to conduct weight-matching. When it is done, (prompting voice: one beep); if not done, shaking or uneven rotation will appear.


● Speed and direction control

Use the arrow button to set speed and direction (see the status indicator for details), e.g.: to set 1 min/r left rotation, press the left arrow speed button until L2 turns red and L1 turns bright and stays on. The setting is done.



Status indicator description

The indicators can be used to identify the current speed and direction of the autorotation stand (L2 On: turning left; L3 On: turning right)

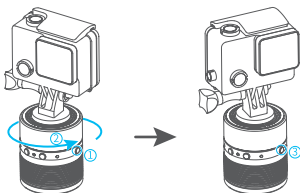
<div>L2 L1 \ (L3)</div>	Red	Green	Blue
	1min/r	5min/r	15min/r
	30min/r	1h/r	2h/r

● Save Speed & Direction Settings

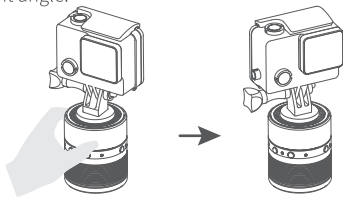
Press and hold the function button to turn off to save the current parameter setting. Press the function button once next time the saved settings resume effective.

● Rotate & Lock

Pattern two: press the function button to pause the device, before rotating its upper half to the desired angle and tap the function button again to enable the device to operate at the locked angle.



Pattern two: when the device is operational, turn its upper half part to the designated angle and keep for 0.5s to lock it, then the device starts working from the present angle.



3. Technical Specifications

Maximum bearing	600g (the distance to the central spot of the autorotation stand less than 84mm)
Life Time	20h
Charging time	2.5 h
Weight	142g

DISCLAIMER

Prohibit any user for any illegal purpose. Users will be responsible for all behaviors of purchase and use products.

The Company assumes no liability for any risks related to or resulting from the debug and use of this product (including the direct, indirect or third-party losses).

For any unknown sources of using, we will not be at any services.

The updating and changes of product firmware and program may cause changes in function descriptions in this user manual, please read the instructions carefully before upgrading the firmware and use the corresponding user manual.

You can get the latest user manual from the official website: www.feiyu-tech.com

FeiyuTech reserves the right to amend this manual and the terms and conditions of use the gimbal at any time.

Attention

- Please follow the operation after the autorotation stand assembly is complete.
- When the autorotation stand is not in use or placed on the table, please ensure it is powered off.

Guilin Feiyu Technology Incorporated Company

Website: www.feiyu-tech.com

E-mail: service@feiyu-tech.com

Tel: +86 (0)773 2320866

Due to software and hardware improvements, your actual product might differ from the descriptions and pictures in this user manual. You can get the latest user manual from the official website.

For more information, please visit our official website

