

# **α2000 /1000 Gimbal Firmware Upgrade Manual**

## **for Mac**

### **Attention**

1. Please install the battery before firmware upgrade.
2. The upgrade software and USB driver are compatible with the Mac OSX.
3. Please do the operations step by step strictly.
4. If you want to check current firmware version, please execute step 1-7.

### **Steps**

1. Download the latest firmware, update software and the USB driver from our official website <http://www.feyu-tech.com>, Unzip them for further usage.
2. Double click on "USB Driver for Mac.dmg" to get "Silicon Labs VCP Driver Install Disk". Double click on "Silicon Labs VCP Driver Install Disk" to get "Silicon Labs VCP Drive.pkg". Double click on "Silicon Labs VCP Drive.pkg" to install the USB driver, finish it step by step.



USB Driver For  
Mac.dmg

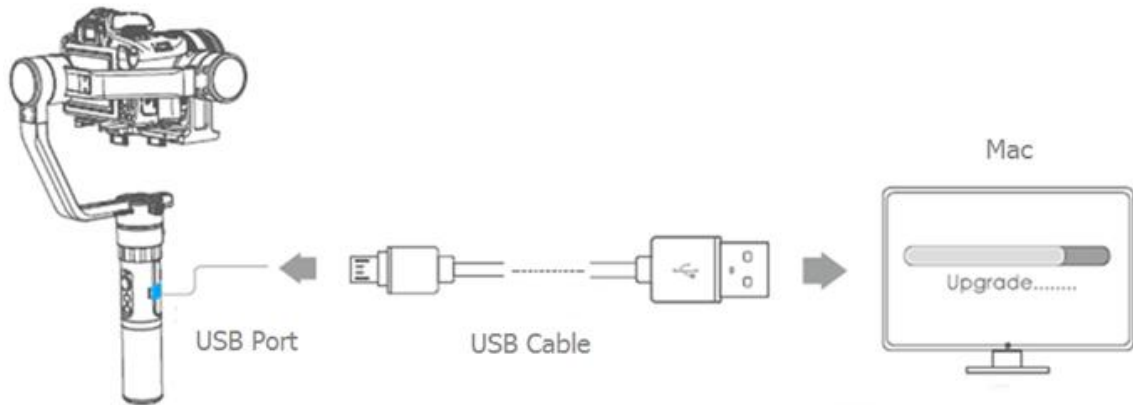


Silicon Labs VCP  
Driver Install Disk

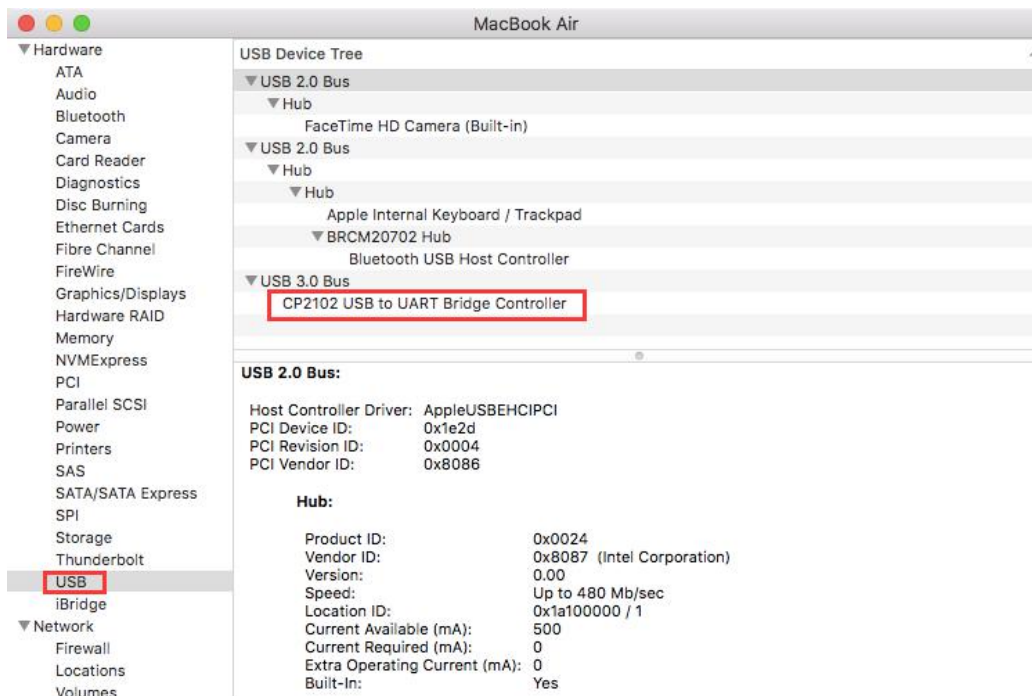


Silicon Labs VCP  
Driver.pkg

3. Put the battery into the gimbal, please refer following connection diagram, connect the USB cable with USB port of Mac and the gimbal. The charging indicator on the handle of gimbal will be on(charging status). Please keep the gimbal off until step 7.



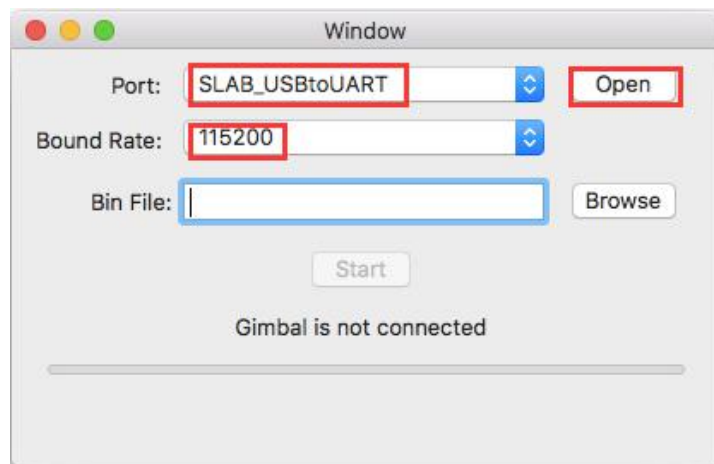
4. Check the USB port by choosing "About This Mac" ---- "System Report" --- "USB" , and check whether "CP2102 USB to UART Bridge Controller" is in the hub list.



5. Double click on "Feiyu Firmware tool.dmg" to get "Feiyu Upgrader" .  
Double click on "Feiyu Upgrader" to get "Feiyu Gimbal Upgrader" .  
Double click on "Feiyu Gimbal Upgrader" to run the software.



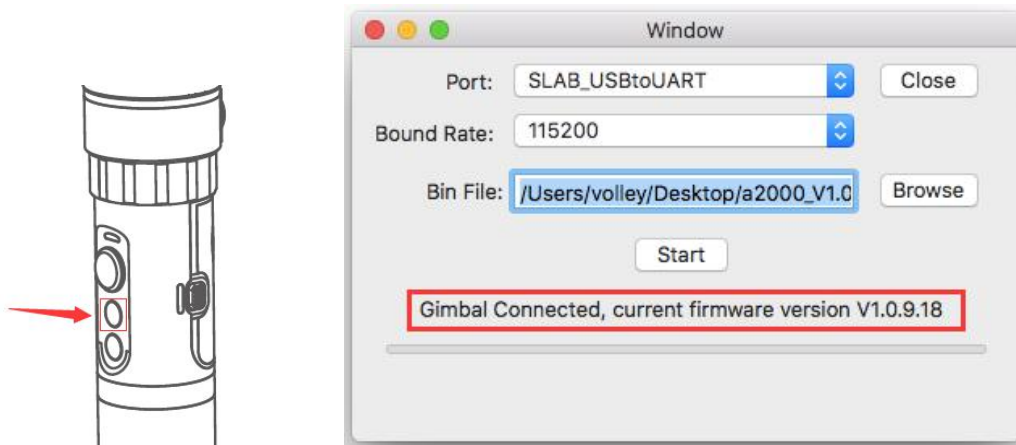
6. The software interface is shown as the following picture. Select "SLAB\_USBtoUART" and baud rate as "115200" , click on "Open" button.



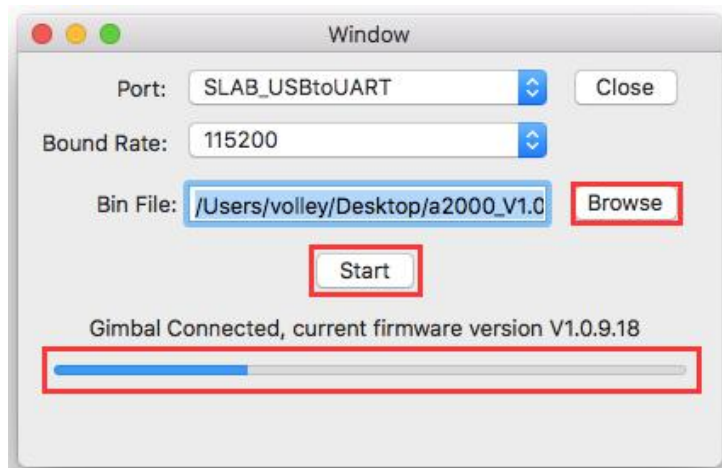
7. Long press the function button and hold it, the connection between the gimbal and the computer will be established automatically, the connection status and the current version show up(For example, "Gimbal Connected, current firmware version V1.0.9.18" ) .

Keep holding the function button for about 2 seconds, release it ,the status of the indicator will keep flashing blue, which means the power is ready and the connection is done.

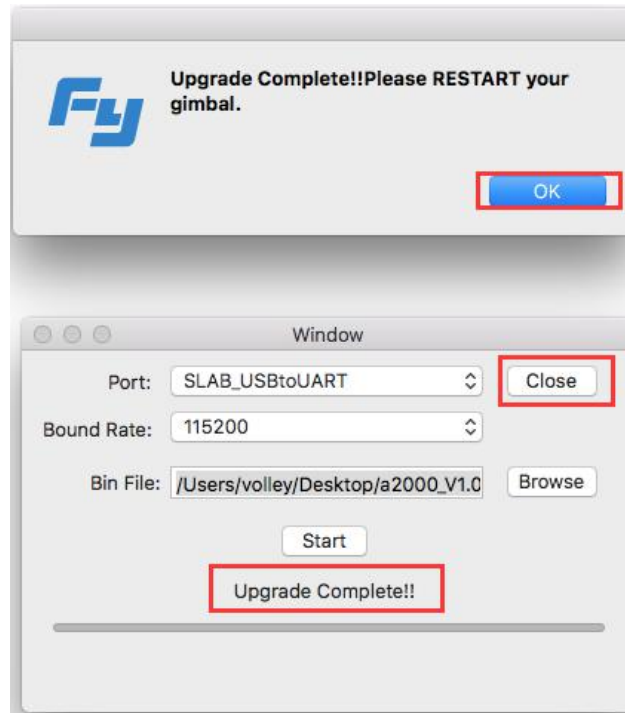
(Tips: If you can' t see the status indicator keep flashing blue, please long press the function button for 2 seconds again.)



8. Click on "Browse" button and choose right firmware for the gimbal , then click on "Start" to start updating. The blocks will be sent one by one.



9. After all the blocks of the firmware are completely sent , "Upgrade Complete" will be shown. Please click on "OK" to finish the upgrade, Then close the software and unplug the USB cable.



10. Long press the function button of the gimbal to turn down the gimbal.  
The upgrade is done.

## FAQ

**NO.1** “Gimbal Connected” didn't show up when pressing the function button.

**A:**

- ① Please check whether tightly plug in USB cable with USB port, and the USB cable is right cable from our standard accessories.
- ② Please check whether keep the gimbal off until step7.
- ③ Please check whether choose the right USB port: SLAB\_USBtoUART and baud rate as 115200.
- ④ Please check whether press the function button after clicking on “OPEN

COM" button.

If you did all the things right, please replace a new USB cable and try again.

**NO.2** When "Gimbal Connected" and the version of current firmware showing up, click on "Start", but no luck, "SEND FAIL" just show up to remind me the update don't work.

**A:** It happened because you didn't hold the function button for enough time, and the power didn't start well. When the power is ready, the status indicator will flash blue consistently, if not, please keep holding the function button for 2 seconds.

**NO.3** After clicking on "UPDATE START", "send block 10..." show up in the interface, but "SEND FAIL" happen during the update.

**A:** If "SEND FAIL" shows up during the update, there may be something wrong with the connection between control boards.

Please try to start update again, if the same issue happen, please kindly send back to us for repair.

**Check more details in tutorial video(The operation of α2000/1000 is the same as G5, only difference in the status of indicator):**

<https://youtu.be/yDHTLYQtnbc>

—— END ——

**Note:** We reserve the right to change this manual at any time! And the latest edition will be shown on our official website [www.feiyu-tech.com](http://www.feiyu-tech.com).